



Received on 31 May, 2017; received in revised form, 04 August, 2017; accepted, 11 August, 2017; published 01 February, 2018

DEVELOPMENT AND *IN VITRO* EVALUATION OF SELF EMULSIFYING FORMULATION FOR EMBELIN

Neeraj*, Vineet Mittal and Arun Nanda

Department of Pharmaceutical Science, Maharshi Dayanand University, Rohtak - 124001, Haryana, India.

Keywords:

Embelin, SEDDS
Evaluation, Formulation

Correspondence to Author:

Ms. Neeraj

Research Scholar,
Department of Pharmaceutical
Sciences, Guru Jambheshwar University,
Hisar - 125001, Haryana, India.

E-mail: neerajpanihar@gmail.com

ABSTRACT: The purpose of present work was to improve the oral bioavailability of embelin by formulating this hydrophobic phytoconstituent as self emulsifying drug delivery system (SEDDS). SEDDS improves the oral bioavailability by overcoming the dissolution step, enzymatic degradation and hepatic first pass metabolism of phytoconstituent. On the basis of solubility study of embelin, ethyl oleate, tween 80 and span 20 were selected as oil, surfactant and co surfactant respectively for the formulation. Phase diagram study revealed the ratio of surfactant and co surfactant (S_{mix}) for effective self emulsification. Prepared batches of formulation were evaluated for various physicochemical parameters which includes thermodynamic stability study, emulsification time, morphology study of droplets, determination of zeta potential, viscosity determination, percentage drug content, long term stability study. Pharmacokinetic study of plain drug, marketed tablet and SEDDS of embelin was also done which includes *in vitro* drug release study which revealed that the pattern of drug release is almost uniform and constant moreover embelin SEDDS have highest percentage cumulative drug release (93%) as compared to the conventional dosage form tablet (47%) and plain drug (34%).


INTRODUCTION: Herbal medicines are more significant than the synthetic medicines but their phytoconstituent have poor aqueous solubility or they have lipophilic nature which in turn leads to their low oral absorption. Embelin is a naturally occurring alkyl substituted hydroxyl benzoquinone. Pharmacological and clinical studies has indicated that embelin exhibits a wide array of therapeutic activities, such as antibacterial, antidiabetic, anxiolytic, anticancer, analgesic, antidepressant, chemoprotective, hepatoprotective and antifertility action but it is hydrophobic in nature and exhibits poor aqueous solubility thus is less bioavailable therefore it was aimed to develop a self emulsifying formulation which could improve its bioavailability 1, 2, 3.

Self emulsifying drug delivery system (SEDDS) is a novel lipid based formulation which provides an advanced approach to overcome the constraints of poor aqueous solubility of certain phytoconstituents⁴. SEDDS is an isotropic mixture of drug, oil, surfactant and co-surfactant/co-solvent which on oral administration, spontaneously forms o/w emulsion by the peristaltic movements of gastro intestinal tract, followed by dilution with aqueous medium inside the stomach.

These small droplets of emulsion provide large surface area and have less surface tension which results in better dissolution and release of drug and hence improves the solubility of poorly aqueous soluble herbal drugs⁵. Prevention of first pass metabolism of drug in these formulations also contributes towards the improved bioavailability of drug⁶.

MATERIALS AND METHODS:

Materials: Embelin was purchased from Yucca Enterprises, Mumbai. Tween (80, 60 and 20), Oleic acid, Ethyl oleate, Potassium dihydrogen phosphate,

QUICK RESPONSE CODE 	DOI: 10.13040/IJPSR.0975-8232.9(2).633-41
	Article can be accessed online on: www.ijpsr.com
DOI link: http://dx.doi.org/10.13040/IJPSR.0975-8232.9(2).633-41	

Span 20 and Disodium hydrogen orthophosphate were procured from Hi media Labs, Mumbai. Soyabean oil, Castor oil, Clove oil and Sesame oil were purchased from CDH Pvt. Ltd, New Delhi. Cremophor, 1, 2-propanediol, Span 20 and PEG 400 were obtained from Molychem Pvt. Ltd., Mumbai India. All other chemicals used were of analytical grade and solvents used were purchased from Spectrochem Pvt. Ltd.

Methods:

Quantitative Solubility Study of Embelin:

Screening of excipients for a simple and stable self emulsifying formulation is a quite challenging task. Stable formulation depends upon the fair solubility of a drug in the excipients⁷. Solubility of the embelin in various oils, surfactants and co solvent/co-surfactants was determined by dissolving an excess amount of the embelin in small quantity (2 ml) of the selected oils, surfactants and co-surfactants and mixed using a vortex mixer for about 20 min. These mixtures were allowed to equilibrate at 25 °C in a bath sonicator for 72 h then these equilibrated samples were centrifuged at 3000 rpm for 15 minutes. The supernatant was diluted with methanol and filtered through 0.45µm membrane filter. After this the concentration of the embelin was determined by double beam UV-Visible Spectrophotometer at 291 nm⁸.

Pseudoternary Phase Diagram Study: The Pseudoternary phase diagrams were constructed at ambient temperature by water titration method using selected excipients. The ternary mixtures with varying concentration of excipients were prepared and the effect of relative concentration of these excipients on self emulsification region in the phase diagram was studied. Four phase diagrams of four different ratios of surfactant and co surfactant (S_{mix}) (1:1, 1:2, 2:1 and 3:2) were constructed. For each phase diagram oil and S_{mix} are mixed thoroughly to delineate the boundaries of phase in a ratio of 1:9 to 9:1. Slow titration to each weight ratio of oil, surfactant and co surfactant with water was carried out. The formation of the emulsion was visually observed as transparent and easily flowable o/w emulsion and marked on the phase diagram. Transparent and single phase mixtures having low viscosity were considered as

nanoemulsions. Phase diagrams were constructed using chemmix school software⁹.

Preparation of SEDDS for Embelin: From the four phase diagrams the S_{mix} having largest self emulsifying area was selected. Nine batches having oil to S_{mix} ratio 1:9 to 9:1 has been prepared. Initially blank formulations were prepared by dissolving the selected ratio of oil, surfactant and co-surfactant in proper ratio using vortex mixer at room temperature. Embelin was added to this mixture with constant stirring until a transparent preparation was obtained. The isotropic mixture was kept in glass vial and stored at 25 °C^{10, 11}.

Evaluation of Liquid SEDDS:

Observation for Phase Separation: Prepared SEDDS (containing Embelin) was observed for phase separation by diluting it with 250 ml distilled water at 37 °C temperature. After this the diluted formulation was vortexed for 5 min and then stored for 24 hrs. After storage formulations were observed visually for any precipitation and phase separation¹².

Determination of Emulsification Time:

Effectiveness of self-emulsifying formulation was assessed by using a standard USP XXII dissolution apparatus type II. 1ml of each formulation was added to 500 ml of aqueous media at 37 ± 0.5 °C at 50 rpm. *In vitro* performances of the formulations are visually assessed by standard grading method. According to the efficiency of emulsification A, B, C, D and E grades will be assigned to the batches¹³.

Thermodynamic Stability Study: In order to evaluate the stability of embelin SEDDS, the formulation was subjected to heating and cooling cycle by storing at 4 °C and 45 °C (six cycles) for at least 48 hrs. Those batches which are stable at these temperatures were subjected to centrifugation at 3500 rpm for 30 min. Formulations without any phase separation were taken for freeze thaw stress test in which the formulations were stored at -21 °C and 25 °C (three cycles) for not less than 48 hrs¹⁴.

Percentage Transmittance Test: In order to check any precipitation in the formulation percentage transmittance was checked using the UV visible spectrophotometer after mixing the formulation with distilled water in ratio 1:100¹².

Determination of Droplet Size and PDI: Droplet size and PDI is determined using the Malvern zetasizer instrument. Sample was prepared by dispersing a small amount (0.1 ml) of formulation in 50 ml of distilled water and sonicated for 15 minutes. Each sample was taken in cuvettes and filled up to 30 % of its capacity and droplet size and PDI were determined^{13,15}.

Determination of Zeta potential: Zeta potential is the potential between the tightly bound surface liquid layer (shear plane) of the particle and the bulk phase of the solution. The measurement of the zeta potential tells about the stability. In SNEDDS the charge on an oil droplet is negative due to the presence of free fatty acids. The more negative zeta potential, greater the net charge of droplets and formulation will be more stable.

Zeta potential is determined using the zeta sizer. The sample was prepared by dispersing a small amount (0.1 ml) of formulation in 50 ml of distilled water and sonicated for 15 minutes. Each sample is taken in cuvettes one by one and filled upto 30 % of its capacity and Zeta potential was determined^{13,15}.

Viscosity of SEDDS: Viscosity of formulations was determined by Brookfield viscometer. All the readings were taken in triplicate for better accuracy^{13,15}.

Percentage Drug Content Analysis: Percentage drug content analysis is performed to ensure the actual drug content in the formulation is equivalent to labelled drug content. This analysis is done by dissolving a preweighed amount of formulation in methanol and thus the drug gets extracted in to the methanol. The resultant solution was suitably diluted with methanol and the absorbance was measured at 291 nm, using the double beam UV-Visible spectrophotometer. The drug content was determined from the calibration curve of embelin. This test was performed in triplicate and the average drug content for each formulation was calculated⁷.

Morphological characterization: Morphology of the self emulsifying formulation droplets was characterized using transmission electron microscopy. Prior to the analysis, the prepared SEDDS samples were diluted with distilled water

to form an emulsion. A drop of the diluted emulsion was placed on a film coated 400-mesh copper grids for 30 min and excess fluid was removed with the help of filter paper. The samples were later stained with 2% (w/v) phosphotungstic acid for 30 seconds and then dried for 20 min before observation¹⁶.

In vitro Drug Release Studies: *In vitro* release of embelin from optimized SEDDS formulation and marketed formulation (**Table 1**) was determined using USP dissolution apparatus (Type II). Phosphate buffer pH 7.4 (500 ml) was used as dissolution media. Prepared formulation of embelin was kept in the pouches prepared using dialysis membrane (width 32.34 mm, Avg. diameter 21.5 mm and the capacity of 3.63 ml/cm) which was soaked overnight in phosphate buffer (pH 7.4) at temperature 37 ± 0.5 °C. Apparatus was set up at 100 rpm paddle speed and aliquots of dissolution fluid “10ml” were withdrawn at specified interval of time. Fresh buffer solution was added to the beaker at the same rate, in order to keep the volume constant. Dissolution fluid was assayed to estimate the concentration of released embelin by double beam UV-VIS spectrophotometer at λ_{\max} 291nm. This test was performed in triplicate and the average drug release for each formulation was calculated¹⁷.

Long Term Stability Study (03 months): In order to evaluate the long term stability of the optimized SNEDDS the formulation of embelin was filled into sealed glass vials and then these vials were stored at 4 °C for 3 months. After 3 months formulations were evaluated for the clarity, phase separation, percentage drug content and particle size were determined as per the method prescribed earlier¹⁸.

RESULTS AND DISCUSSION:

Quantitative Solubility Study of Embelin: Solubility study of embelin in various excipients has shown that drug has maximum solubility in ethyl oleate (oil), tween 80 (surfactant) and span 20 (co surfactant), shown in **Table 1**. Non ionic and non toxic surfactant and co surfactant (tween 80 and span 20) were selected for the formulation of embelin SEDDS on the basis of maximum solubility of drug. The **Fig. 1** show the bar diagram of embelin solubility in various excipients.

TABLE 1: CONCENTRATION OF EMBELIN IN VARIOUS EXCIPIENTS

Sr. no.	Oil	Concentration of embelin (mg/ml)
1.	Soyabean oil	7.6
2.	Castor oil	3.5
3.	Clove oil	10.2
4.	Ethyl oleate	14.0
5.	Oleic acid	11.7
6.	Sesame oil	6.6
7.	Tween 80	10.1
8.	Span 20	12.2
9.	Cremophor	4.7
10.	PEG 400	6.3

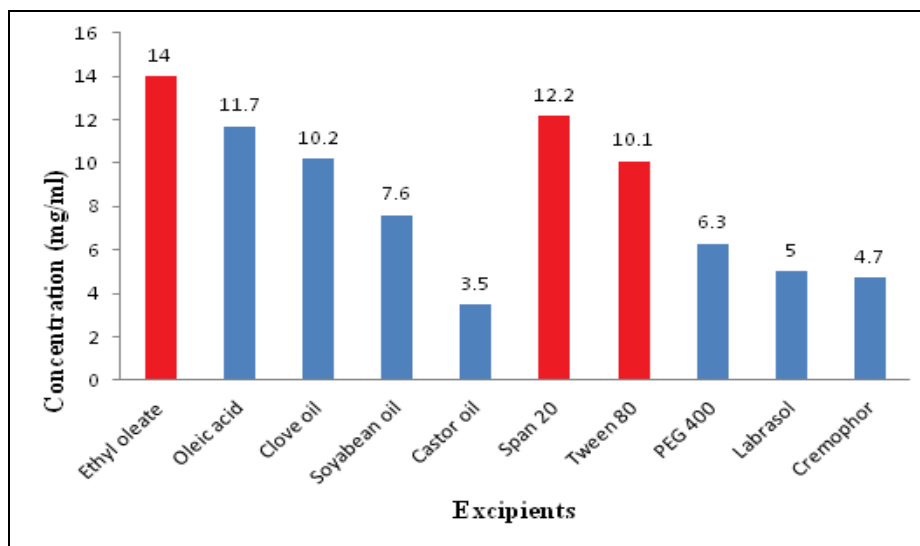
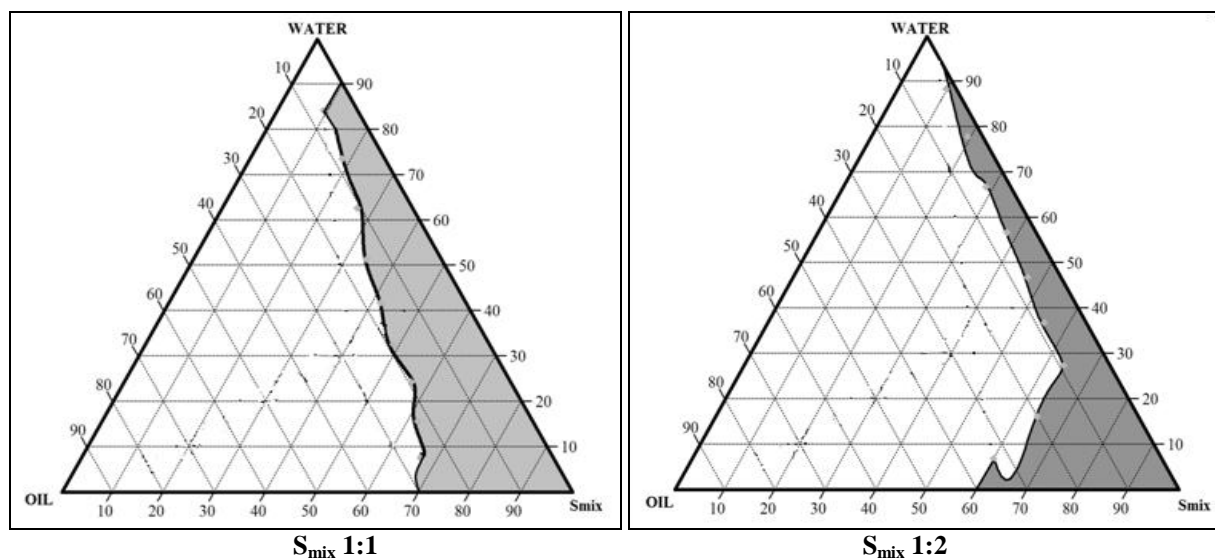


FIG. 1: CONCENTRATION OF EMBELIN IN VARIOUS EXCIPIENTS

Preparation of SEDDS of Embelin: From the phase diagrams (shown in **Fig. 2**) it was concluded that the S_{mix} ratio 1:1 has largest self emulsifying area. Therefore this ratio has been selected for formulation preparation. Nine batches having oil to S_{mix} (surfactant: co surfactant 1:1) ratio 1:9 to 9:1

has been prepared.

Observation for Phase Separation: None of the nine formulated batches has shown phase separation so all batches was further evaluated for self emulsification efficiency test.



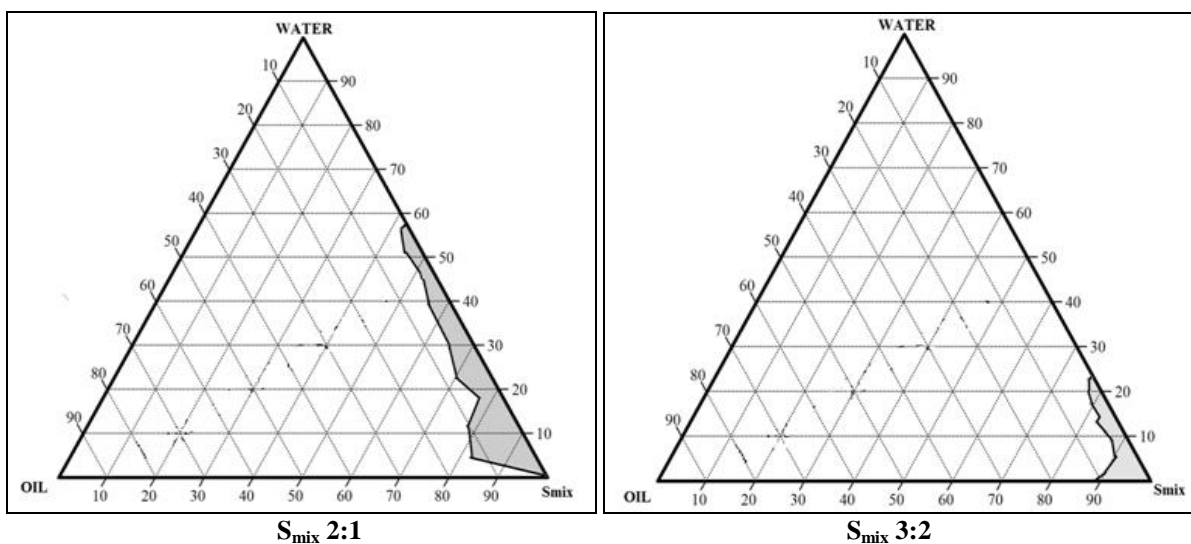


FIG. 2 PSEUDOTERNARY PHASE DIAGRAM OF ETHYL OLEATE, TWEEN 80 AND SPAN 2

Determination of Emulsification Time: Emulsification time of prepared SEDDS of embelin was determined and formulations showing A and B grades in the test were selected for further evaluation. Only batch F has shown long emulsification time as shown in **Table 2**.

TABLE 2: EMULSIFICATION TIME STUDY OF DIFFERENT BATCHES

Sr. No.	Batch	Emulsification time (in sec)	Grades
1.	Batch A	48	B
2.	Batch B	20	A
3.	Batch C	25	A
4.	Batch D	21	A
5.	Batch E	23	A
6.	Batch F	67	C
7.	Batch G	39	B
8.	Batch H	17	A
9.	Batch I	28	A

Thermodynamic Stability Study: Batch A, C and G has shown cracking, creaming and phase separation hence these three batches were drop out

TABLE 4: PERCENTAGE TRANSMITTANCE, DROPLET SIZE, POLYDISPERSIBILITY INDEX, ZETA POTENTIAL, VISCOSITY AND DRUG CONTENT OF DEVELOPED SEDDS

Sr. No.	Batch	Percentage transmittance	Droplet size	PDI	Zeta potential	Viscosity	Drug content
1.	Batch B	98.43	101.4	0.44	-31.4	9	99.17
2.	Batch D	98.46	133.9	0.52	-9.4	13	98.5
3.	Batch E	99.79	184.7	0.34	-33.6	12	99.01
4.	Batch F	99.43	105.9	0.62	-38.0	17	97.91

Determination of Zeta potential: Stability of droplets also depends upon the net charge on the droplets so the zeta potential of the prepared formulation was determined which comes out to be -9.4 to -38. Zeta potential results of four

and not considered for further study as shown in **Table 3**.

TABLE 3: THERMODYNAMIC STABILITY STUDY OF DIFFERENT BATCHES

Sr. no.	Batch	Grades
1.	Batch A	Unstable
2.	Batch B	Stable
3.	Batch C	Unstable
4.	Batch D	Stable
5.	Batch E	Stable
6.	Batch G	Unstable
7.	Batch H	Stable
8.	Batch I	Stable

Percentage Transmittance Test: Calculated value of transmittance ranged from 98.43% to 99.79% as shown in **Table 4**.

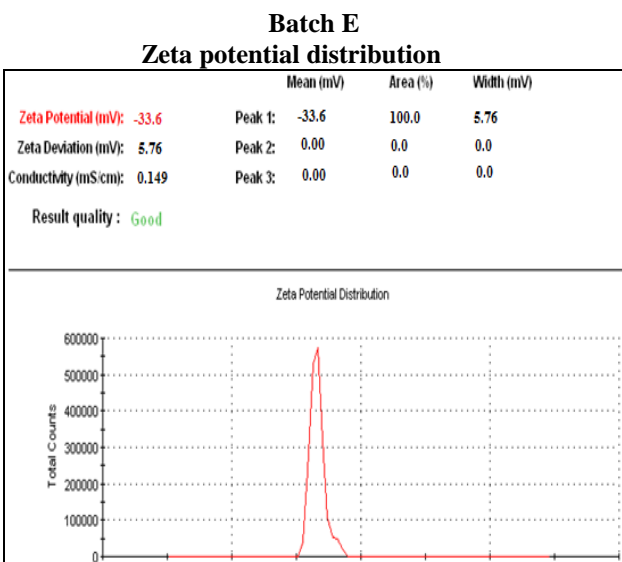
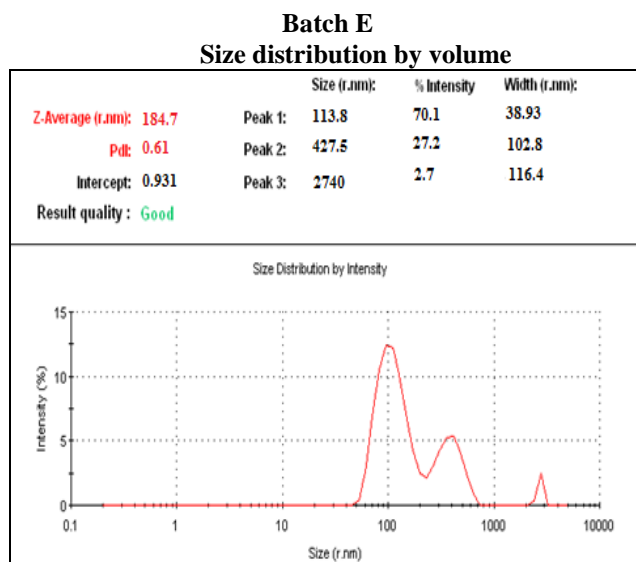
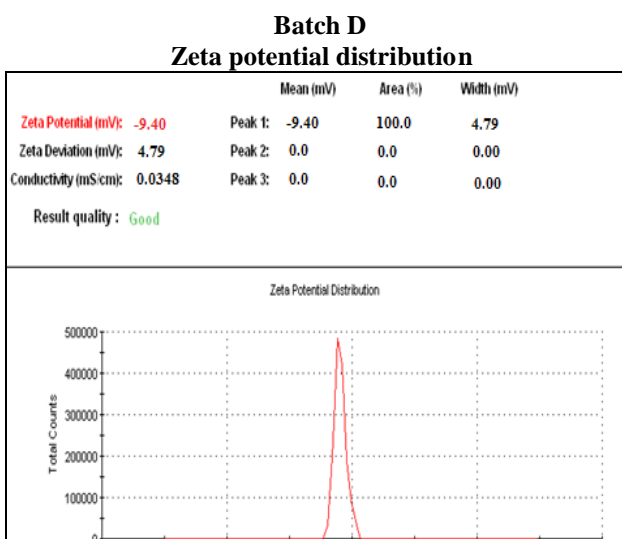
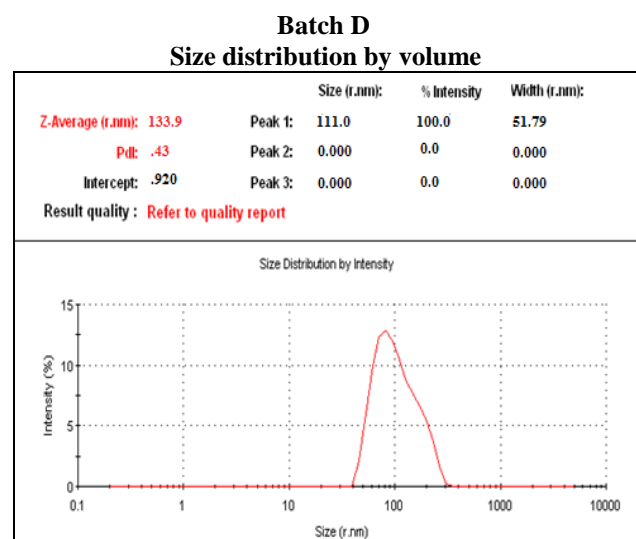
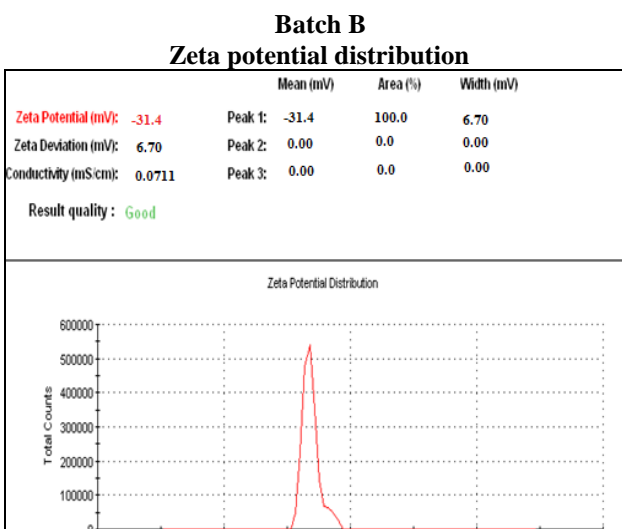
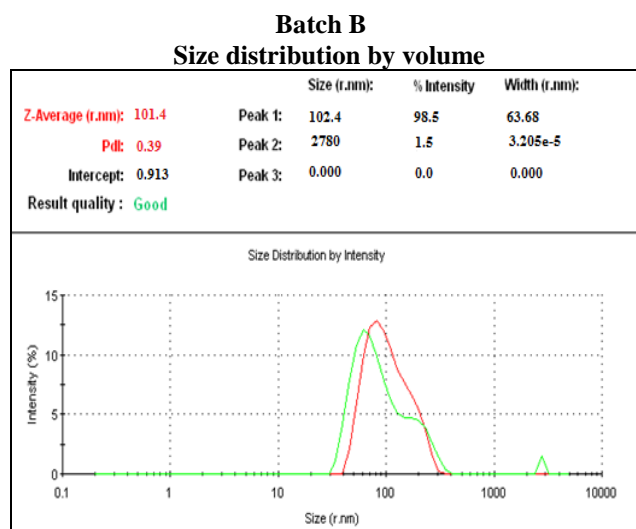
Determination of Droplet Size and PDI: Size of droplet varied from 101.4 to 184.7 nm and their PDI varied from 0.34 to 0.62 as shown in **Table 4** and **Fig. 3**.

formulations are shown in **Table 4**, **Fig. 3** shows bar diagram of zeta potential of all batches.

Viscosity of SEDDS: Data of viscosity of four batches are shown in the following **Table 4** shows

viscosity of all batches through bar diagram. These data shows that all the four batches have viscosity in the desired range hence provides ease in capsule filling.

Percentage Drug Content Study: Percentage drug content of the four batches (B, D, E and F) are shown in **Table 4**. From the data we can conclude that batch has highest percentage drug content.



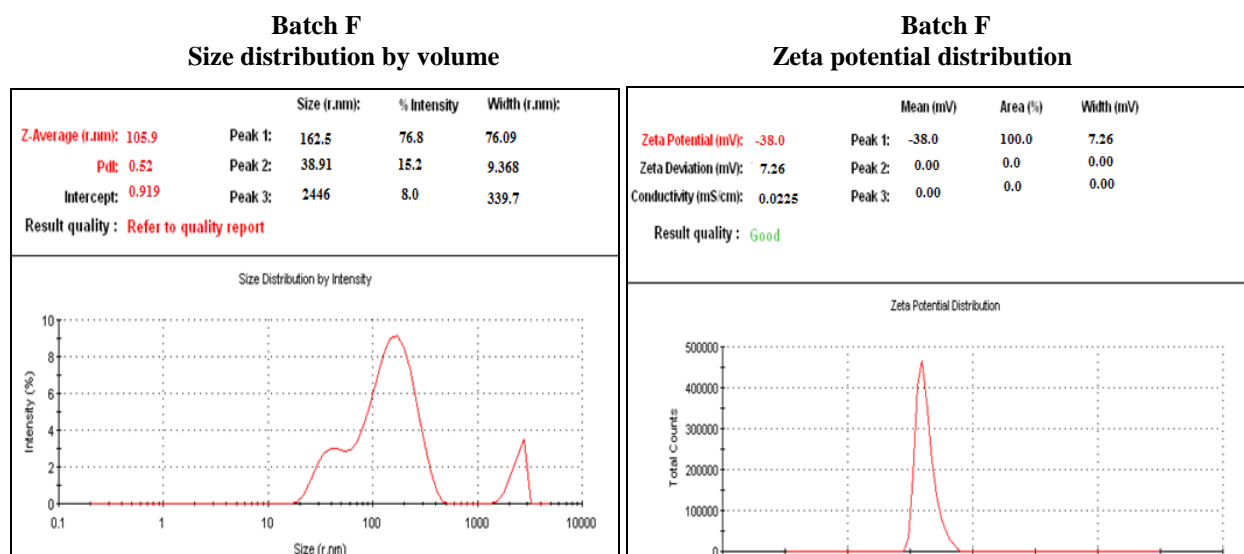


FIG. 3: GLOBULE SIZE ANALYSIS AND ZETA POTENTIAL

Morphological Characterization: The TEM analysis was carried out and report of this analysis is shown in Fig. 4. The analysis reports in figure

reveal that all droplets are of spherical shape with uniform size and diameter and also all droplets are uniformly distributed.

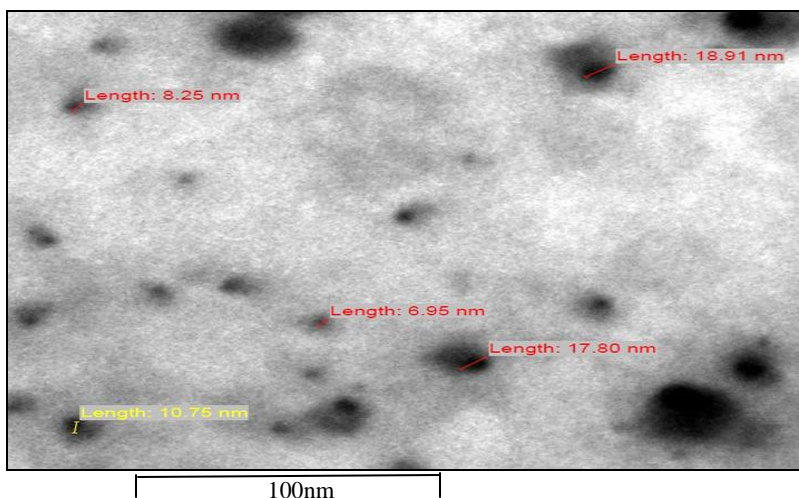


FIG. 4: TEM SHOWING MORPHOLOGY OF EMULSION DROPLETS

In vitro Drug Release Studies: The dissolution of optimized batch of embelin SEDDS, commercial tablet and pure embelin was performed and the cumulative percentage release of embelin from different formulations is presented in Fig. 5. Release of embelin was significantly enhanced in SEDDS formulation as compared with the

commercial tablet and pure drug. *In vitro* release of drug was about 93% from the optimized formulation as compared to 47% from commercial tablet and 34% from pure drug solution after 150 minutes. Fast release of drug in simulated gastric fluid may be attributed to small droplet size of the SEDDS formulation.

TABLE 5: PERCENTAGE CUMULATIVE DRUG RELEASE OF FOUR BATCHES OF SNEDDS

Time interval (min)	% Cumulative drug release		
	Plain drug	Tablet	Optimized batch
30	7	12	15
60	14	24	28
90	22	36	56
120	27	43	73
150	34	47	93

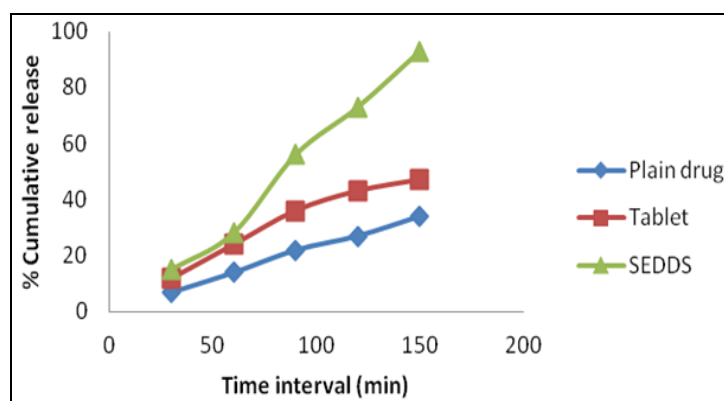


FIG. 5: CUMULATIVE % DRUG RELEASE REPORTS OF BATCHES OF SNEDDS

Long Term Stability Study (03 months): Stability study for the 03 months of the formulation was done. After 03 months storage none of the batches

showed significant change in clarity, drug content and droplet size. The results shown in table indicate all the batches are stable.

TABLE 6: STABILITY STUDY OF OPTIMIZED BATCH

Time (month)	Physical appearance	Emulsification time (sec)	% transmittance	Particle size	PDI	Drug content
0	Clear liquid	24	98.43	110.7	0.34	98.01
1	Clear liquid	26	97.46	111.3	0.39	99.01
2	Clear liquid	23	99.79	115.7	0.37	98.5
3	Clear liquid	24	98.43	110.2	0.34	98.1

CONCLUSION: Present study has clearly demonstrated the potential utility of SEDDS for formulating embelin with improved aqueous dispersibility and stability by taking ethyl oleate as oil phase and Tween 80 as surfactant and span 20 as co surfactant. Drug release from the optimized SEDDS formulation of embelin was significantly higher (93%) than the marketed formulation *i.e.* tablet (47%) and plain drug solution (34%). Stability and better release of drug might be due to the small size of droplets in the self emulsifying formulation. These results suggested that the embelin SEDDS could be the better alternative to traditional oral formulation. Research findings are also consistent with previous studies which indicate that the SEDDS formulation will be valuable in the industry and may serve as a novel approach for the formulation development of hydrophobic drugs in a dosage form.

ACKNOWLEDGEMENT: The authors would like to acknowledge the Department of Pharmaceutical Sciences, Maharshi Dayanand University, Rohtak, Haryana for providing the necessary infrastructure and research facilities.

DECLARATION OF INTEREST: The authors declares no conflict of interest.

REFERENCES:

- Souravi K, and Rajasekharan PE: A review on the pharmacology of *Embelia ribes* burm. f.-A threatened medicinal plant. International Journal of Pharma and Bio sciences 2014; 5(2):443 – 456.
- Kaur V, Hallan SS, Kalia AN, Mishra N: Isolation of embelin from *Embelia ribes* and evaluation of its anti-cancer potential in breast cancer. Asian Journal of Pharmacy Pharmacology 2015; 1(1):33–9.
- Radhakrishnan N, Gnanamani A: 2, 5-dihydroxy-3-undecyl-1, 4-benzoquinone (embelin)-a second solid gold of India- a Review. International Journal of Pharmacy and Pharmaceutical Sciences 2014; 6:23–30.
- Sharma VK, Koka A, Yadav J, Sharma AK, Keservani RK: Self-Micro Emulsifying Drug Delivery Systems : A Strategy to Improve Oral Bioavailability. Ars Pharmaceutica 2016; 57(3): 97–109.
- Gangopadhyay A, Mantry S, Soundrapandian C. Self Emulsifying Drug Delivery System-A Concept Which Enhance The Solubility And Bioavailability Of Poorly Water Soluble (Class-II Type) Drug. International Journal of Biopharmaceutics 2016; 7(1):48-58.
- Lade S, Telrandhe U, Burle S, Kosalge S: Self-Emulsifying Drug Delivery System - A Novel Approach To Improve Oral Bioavailability. European Journal of Pharmaceutical and Medical Research 2016; 3(1):164–73.
- Narang AS, Delmarre D and Gao D: Stable drug encapsulation in micelles and microemulsion. International Journal of Pharmaceutics 2007; 345: 9-25.
- Jaiswal P, Aggarwal G, Harikumar SL, Singh K: Development of self-microemulsifying drug delivery system and solid-self-microemulsifying drug delivery system of telmisartan International journal of Pharmaceutical Investigation 2014; 4(4):195–206.
- Chintalapudi R, Murthy TEGK, Rajya Lakshmi K, and Ganesh Manohar G: Formulation, optimization, and

- evaluation of self-emulsifying drug delivery systems of nevirapine. International Journal of Pharmaceutical Investigation 2015; 5(4): 205–213.
10. Sachan R, Khatri K and Kasture S.B. Self emulsifying drug delivery system a novel approach for enhancement of bioavailability. International Journal of Pharmaceutical Research 2010; 2(3):1738–45.
 11. Nirosha M, Badrinath AV, Hyndavi N, Prasad K, Naveen N and Kumar PA. Recent advances in self emulsifying drug delivery system. International Journal of Review in Life Sciences 2011; 1(4):206-214.
 12. Sagar K, Kendre P, Pande V and Chaudhary V. Design , Development and Characterization of Self-Nanoemulsifying Drug Delivery System (SNEDDS) of Nateglinide. World Journal of Pharmacy and Pharmaceutical Sciences 2014; 3(8):794–811.
 13. Balata GF, Essa EA, Shamardl HA, Zaidan SH, Abourehab MAS: Self-emulsifying drug delivery systems as a tool to improve solubility and bioavailability of resveratrol Drug Design, Development and Therapy 2016; 10:117 - 128.
 14. Khedekar K and Mittal S: A review: Self emulsifying drug delivery system. International Journal of Pharmaceutical Sciences and Research 2011; 3:23–8.
 15. Goyal U, Arora R, Aggarwal G: Formulation and evaluation of self microemulsifying drug delivery system of carbamazepine. Int J Res Pharm Sci 2011; 2(2):162–9.
 16. Nasr A, Gardouh A, Ghorab M: Novel solid self-nanoemulsifying drug delivery system (S-SNEDDS) for oral delivery of olmesartan medoxomil: Design, formulation, pharmacokinetic and bioavailability evaluation. Pharmaceutics 2016; 8(3).
 17. Patel PK, Pundarikaksudhu K, Momin M and Patel MM. Studies on formulations and *in vitro* dissolution of Embelin tablets. Indian journal of Pharmaceutical Sciences 2001; 68(5): 227-230.
 18. Cui J, Yuc B, Zhaoe Y, Zhua W, Li H and Louf H. Enhancement of oral absorption of curcumin by self-microemulsifying drug delivery systems. International Journal of Pharmaceutics 2009; 371:148–155.

How to cite this article:

Neeraj, Mittal V and Nanda A: Development and *in vitro* evaluation of self emulsifying formulation for embelin. Int J Pharm Sci Res 2018; 9(2): 633-41.doi: 10.13040/IJPSR.0975-8232.9(2).633-41.

All © 2013 are reserved by International Journal of Pharmaceutical Sciences and Research. This Journal licensed under a Creative Commons Attribution-NonCommercial-ShareAlike 3.0 Unported License.

This article can be downloaded to **ANDROID OS** based mobile. Scan QR Code using Code/Bar Scanner from your mobile. (Scanners are available on Google Playstore)