



Received on 28 April, 2012; received in revised form 18 June, 2012; accepted 19 August, 2012

THE *IN-VIVO* EFFECTS OF PARTIALLY PURIFIED SUB-FRACTION (TAF2) OF THE CRUDE METHANOLIC EXTRACT OF *EURYCOMA LONGIFOLIA* ROOTS ON THE HAEMATOLOGICAL, BIOCHEMICAL AND HISTOLOGY PARAMETERS

Omar Saeed Ali Al-Salahi ¹, Abdel-Hamid Zaki ¹, Kit-Lam Chan ², Amin Malik Shah ², Wan Zaidah Abdullah ³, Narazah Mohd Yusoff*¹

Advanced Medical and Dental Institute (AMD I) ¹, Universiti Sains Malaysia (USM), 13200 Kepala Batas, Pulau Pinang, Malaysia

School of Pharmaceutical Sciences ², USM, 11800 Penang, Malaysia

Haematology Department, School of Medical Sciences ³, USM, 16150 Kubang Kerian, Kelantan, Malaysia

ABSTRACT

Keywords:

Eurycoma longifolia,
Histopathology,
Haematological,
Biochemical parameters

Correspondence to Author:

Narazah Mohd Yusoff

MBBS (Malaya), DCP (London), M Med Sc (London), PhD (Kobe), Associate Professor and Hematologist, Advanced Medical and Dental Institutem, Universiti Sains Malaysia, No 6 (Lot 13), Persiaran Seksyen 4/9, Bandar Putra Bertam, 13200 Kepala Batas, Pulau Pinang, Malaysia

E-mail: narazah@amdi.usm.edu.my

Eurycoma longifolia (*E. longifolia*) Jack has been widely used in traditional medicine for its antimalarial, aphrodisiac, anti-diabetic, antimicrobial, anti-pyretic and anticancer activities. As yet, no study has been done on biosafety of partially purified sub-fraction (TAF2) of the crude methanolic extract of *E. longifolia* roots. This study aims to evaluate, *in vivo*, the effects of TAF2 on the haematological, biochemical and histology parameters in nude mice. Male nude mice were treated orally with TAF2 (200 mg/Kg/mouse) every other day for 16 days. Untreated mice were used as controls. Blood samples were collected by intra-cardiac puncture and haematological and biochemical parameters were analyzed by using animal blood counter and automated chemistry analyzer, respectively. Hematoxylin-eosin stain (H&E) was used to evaluate the histopathology changes. Blood cells morphology was assessed by Wright stain of the thin blood films. The results showed normal blood haematology and clinical chemistry. Histological examination of TAF2 treated vital organs (kidney, liver and spleen) of mice showed no apparent change with the dose used. In conclusion, *E. longifolia* root methanolic extract is safe on short-term exposur.

INTRODUCTION: Natural products are considered the most consistent and successful source of drugs. It has been reported that about 3.5 to 4 billion (80 %) of people in the world especially in developing countries depend on traditional medicine for their primary health care ^{1,2}. About 60 to 75 % of the new approved drugs were of natural origin. These include original natural products, products derived semisynthetically from natural products, and synthetic products based on natural product models ^{3,4}.

The process of drug development encompasses the discovery, preclinical and clinical phases and it has been estimated that only 1 of 10,000 chemicals that enter the discovery process can reach the market ⁵.



To determine the success of drug development, two major issues to be considered, drug efficacy and toxicity. About 40% and 89% of newly chemical entities (NCEs) that reach the phase of preclinical and clinical trial respectively fail due to its toxicity effects ⁶.

Eurycoma longifolia Jack (Tongkat Ali) is a slender, evergreen flowering tree from the Simaroubaceae family commonly found in Southeast Asia ⁷. The plant is rich in various bioactive compounds, such as eurycomanole ⁸, eurycomanone, eurycomalactone, 13 α (21)-epoxyeurycomanone, 9-methoxycanthin-6-one, canthin-one alkaloids, β -carboline alkaloids, squalene derivatives, biphenylneolignans, 14, 15 β -dihydroxyklaineanone and tirucallane-type triterpenes ⁹. This plant has been used widely in traditional healing in South East Asia for treatment of various disease among them malaria, schistosomiasis, diarrhea, diabetes and infections. It has also been used as a tonic, energy enhancer, and as an aphrodisiac. The anticancer activities of *E. longifolia* on various tumors, including lung ¹⁰, breast ¹¹ and cervical cancers ¹² have been reported. However studies on the safety of TAF2 have never been reported.

This study is aimed to evaluate, *in vivo*, the biosafety of TAF2 of the crude methanolic extract of *E. longifolia* roots.

MATERIALS AND METHODS:

Plant material: The plant and root samples of *E. longifolia* Jack were identified by Professor Ahmad Latif from Universiti Kebangsaan Malaysia (UKM). The plant samples were collected in 2003 from Perak, Malaysia. A voucher specimen (No. 785-117) was deposited in Penang Botanical Garden, Penang, Malaysia.

The partially purified sub-fraction (TAF2) was derived from resin chromatography of the crude methanolic extract of *E. longifolia* roots as previously reported by Teh, (2010) ¹³.

Before the treatment, TAF2 was dissolved in water and sterilized via the filtration method.

Experimental animals: Male Balb/c nude mice were purchased from BioLASCO Taiwan and acclimatized in a pathogen-free animal facility for 2 weeks before use. Animals were provided with sterile food and water and housed under a standardized 12 h: 12 h light/ dark cycle at room temperature of $24 \pm 2^\circ\text{C}$ and a humidity of $60 \pm 10\%$.

Fourteen mice (8 weeks old, 20 ± 2 g) were divided into two groups (control and treated). Each group consists of 7 mice. Mice in treated group were given TAF2 (200 mg/Kg/mouse) via oral gavage every other day for 16 days while mice in control group received only normal saline. The study protocol was approved by Animal Ethics Committee, Universiti Sains Malaysia (USM).

Haematological Analysis and Serum Biochemical

Analysis: Mice were anesthetized with i.p. ketamine (100 mg/kg) / xylazine (10 mg/kg) mixture. Blood samples were taken by intracardiac puncture. Heparinized blood was used for haematology analysis including haemoglobin, hematocrit, erythrocytes, mean cell volume (MCV), mean corpuscular haemoglobin (MCH), mean corpuscular haemoglobin concentration (MCHC), leukocytes and platelet count as well as blood film. Blood count was carried out using abc animal blood counter (Abbott, USA). Blood films were stained with Wright stain. Plasma was used for biochemical analysis. The plasma levels of urea, creatinine, alanine aminotransferase (ALT), aspartate aminotransferase (AST) and alkaline phosphates (ALP) was determined the automated chemistry analyzer (ChemWell Awareness Technology Inc, Brazil).

Histological Assessment: Mice were authenticated by cervical dislocation and subsequently, liver, spleen and kidneys were collected from each mouse and fixed with 10 % buffered formalin. Paraffin blocks were prepared and sections of 5 μm were cut on a microtome (Accu-Cut[®] SRMTM, SAKURA) and stained with hematoxylin and eosin. The tissue sections were examined and compared with negative controls.

Statistical Analysis: The results were expressed as mean \pm SD. Statistical analysis was carried out using independent- sample t test. $P \leq 0.05$ was considered statistically significant.

RESULTS:

Haematological Parameters Assessment: As shown in table 1 and fig. 1, blood tests do not suggest any systemic changes and the haematological response to

treatment with 200 mg/ml was normal. The difference between various blood counts in the treated and control groups was not significant ($P > 0.5$). Thin blood films show normal morphology of the red blood cells, white blood cells and platelets.

TABLE 1. HAEMATOLOGY RESULTS OF NUDE MICE AFTER ORAL ADMINISTRATION OF 200 mg/kg OF TAF2. SAMPLED AFTER 16 DAYS

	Control	TAF2 (200 mg/kg)	P value
Hemoglobin (g/dl)	15.2 (\pm 1.4)	14.7 (\pm 1.6)	0.654
Red blood cells ($\times 10^6$ /mm ³)	10 (\pm 0.9)	9.3 (\pm 1.6)	0.648
Hematocrit (%)	48.7 (\pm 5.4)	46.5 (\pm 6.7)	0.576
MCV (μm^3)	48.7 (\pm 2.1)	50 (\pm 1.9)	0.311
MCH (pg)	15.2 (\pm 0.5)	16 (\pm 1.2)	0.242
White blood cells ($\times 10^3$ /mm ³)	6.4 (\pm 4.4)	4.8 (\pm 2.4)	0.504
Platelets count ($\times 10^3$ /mm ³)	468.3 (\pm 184.6)	499.6 (\pm 390.6)	0.877

MCV: mean corpuscular volume, MCH: mean corpuscular haemoglobin, MCHC: mean corpuscular haemoglobin concentration. Data are represented as mean \pm standard deviation. P value was calculated using independent t test by comparing between different groups (control group vs treated group). P value \leq 0.05 was considered significant.

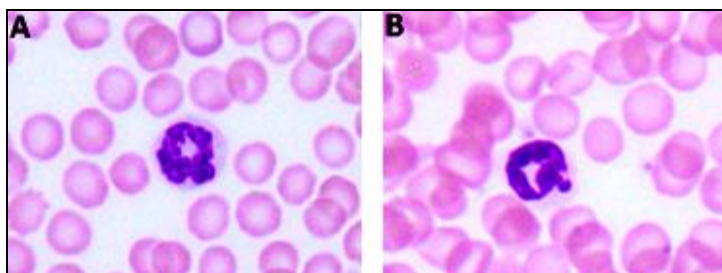


FIG. 1. BLOOD CELLS MORPHOLOGY. WRIGHT STAINED BLOOD FILM FROM THE CONTROL MICE (A) AND TAF2-TREATED MICE (B) AFTER 16 DAYS.

Biochemical Parameters Assessment: Biochemical response to treatment with TAF2 (200 mg/kg) showed a non-significant differences when compared controls. The ALT and AST levels were noted to be slightly increased; however, this increase was not statistically significant ($P > 0.05$).

TABLE 2: BIOCHEMICAL PARAMETERS OF NUDE MICE AFTER ORAL ADMINISTRATION OF TAF2 (200MG/KG) SAMPLED AFTER 16 DAYS

	Control	TAF2 (200 mg/kg)	P value
ALT (U/L)	33.3 (\pm 2.4)	89.2 (\pm 5.8)	0.096
AST (U/L)	77.2 (\pm 25.8)	197.8 (\pm 143.9)	0.133
Urea (mg/dl)	42.8 (\pm 5.4)	35.9 (\pm 5.01)	0.057
Creatinine (mg/dl)	0.22 (\pm 0.06)	0.3 (\pm 0.1)	0.104

ALT: Alanine aminotransferase, AST: Aspartate aminotransferase. Data are represented as mean \pm standard deviation. P value was calculated using independent t test by comparing between different groups (control group vs treated group). P value \leq 0.05 was considered significant.

Histopathologic assessment: Organ sections stained with haematoxylin and eosin (H&E) stain showed normal histology in the control and treated groups. Kidney sections from the control and treated groups animals show normal renal cortex with normal appearing glomerular tufts and tubules. Liver sections show normal hepatic architecture, sinusoids, hepatocytes, portal triad, and central vein from both groups. Spleen sections from control and treated mice show normal splenic lymphoid follicles and splenic sinuses (fig. 2).

DISCUSSION: Experimental screening methods are important in order to evaluate the safety of natural products¹⁴. *E. longifolia* has several significant biological activities and chemical compounds¹⁵. Many products from *E. longifolia* are currently available in the market. Among these products are Tongkat Ali root powder, LJ100 extract, Passion Rx natural sex booster and Prostate Power Rx¹⁶. The reputation of *E. longifolia* products rose from the traditional use of the different parts of this plant.

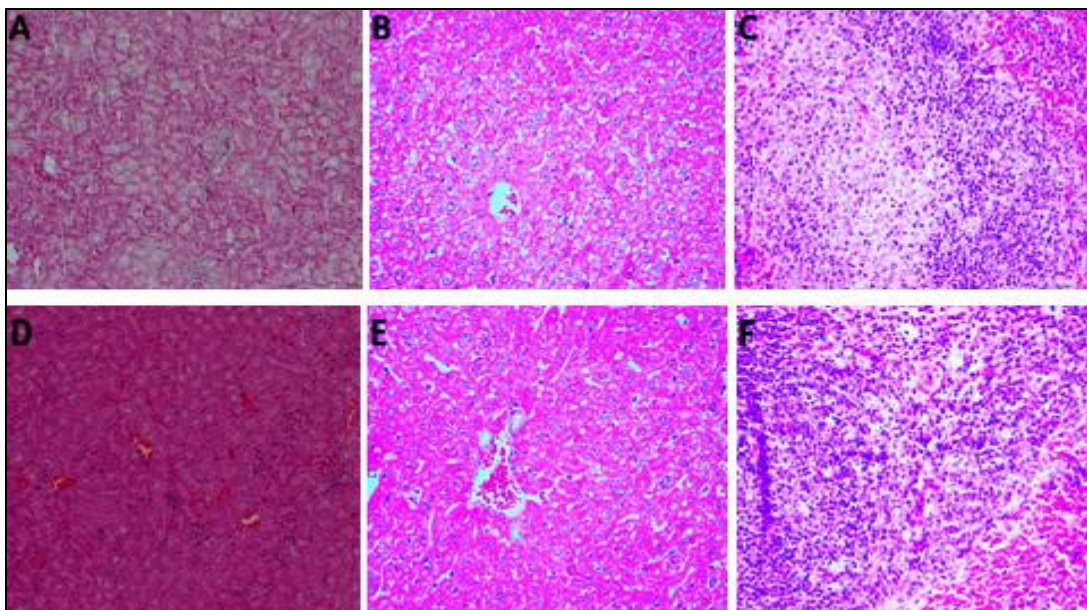


FIG. 2. COMPARATIVE HISTOLOGY OF KIDNEY, LIVER, AND PANCREAS FROM CONTROL MICE (A, B AND C RESPECTIVELY) AND FROM TAF2-TREATED MICE (D, E AND F RESPECTIVELY). Histologic specimens of mice tissues were collected from authenticated mice after 16 days of treatment. Tissue samples were stained with hematoxylin and eosin (H and E). The histological pictures were taken at following magnifications: A & D at 20x; B, C, E & F at 40x

This study was conducted to scientifically evaluate the biosafety of partially purified sub-fraction (TAF2) of *E. longifolia* root methanolic extract. The results clearly showed that oral administration of TAF2 is safe at the dose used (200 mg/Kg) in nude mice. The safety is indicated by the non-significant changes in both biochemical and haematological parameters in treated mice as compared with controls. Blood films from the treated mice also showed normal morphology of blood cells.

Histological examination of the vital organs including liver, spleen and kidneys from treated mice showed no apparent histological changes indicating evidence of biosafety at the dose 200 mg/Kg, administered orally. Biosafety of treatment with TAF2 was also indicated by the absence of any sign of behaviour changes. These findings also correlate with reduced cytotoxicity of TAF2 on normal peripheral blood mononuclear cells (IC_{50} was 180 μ g/ml) as assessed in vitro using MTS assay (unpublished data). Nurkhasanah and Azimahtol, (2008) reported that eurycomanone, isolated from *E. longifolia* root extract, has less toxic effect of on the normal cells lines (MDBK and Vero)¹².

These results also correlated with that reported by Bhat and Karim (2010) where it was shown that an oral administration of 270 -350 mg/kg of *E. longifolia* root extract has no toxic effect¹⁵.

Our study, however has limitations, where we are unable to show the safety using long term administration of TAF2 at this dose. Therefore, further study is required to assess the biosafety or toxicity in long term administration.

In conclusion, short term oral administration *E. longifolia* root extract is safe as indicated by the absence of toxic effects in nude mice.

ACKNOWLEDGEMENT: This work was supported by the Short Term Grant, Universiti Sains Malaysia (USM). Grant number is 304/CIPPT/6311016. The authors would like to thank Dr. Nor Aini Saidin, Dr. Nor Azlina Khalil and other members of IPPT animal house for their assistance. Authors also would like to thank Associate Professor Mohammed Al-Tikriti, from Western University of Health Sciences, USA and Dr. Othman Bin Abdullah from Department of Pathology, Sultan Abdul Halim Hospital, Malaysia, for their assistance in the interpretation of the histopathology slides.

REFERENCES:

1. Sivajothi V and Leelaprakash G: Cytotoxicity screening of alcoholic extract of the whole plant of phyllanthus rheedii. Res J Chem Environ 2010; 14: 81 – 82.
2. Rahman S, Ismail M, Muhammad N, Ali F, Chishti KA and Imran M: Evaluation of the stem bark of *Pistacia integerrima* Stew ex

- Brandis for its antimicrobial and phytotoxic activities. *Afri J Pharm Pharmacol*, 2011; 5: 1170 -1174.
3. Newman JD, Cragg MG and Snader MK: Natural Products as Sources of New Drugs over the Period 1981-2002. *J Nat Pro*. 2003; 66: 1022 -1037.
 4. Ji H-F, Li X-J and Zhang H-Y: Natural products and drug discovery. *EMBO Rep* 2009; 10, 194 – 200.
 5. Fabricant SD and Farnsworth RN: The Value of Plants Used in Traditional Medicine for Drug Discovery. *Environ Health Perspect* 2001; 109, 69 – 75.
 6. James M and McKim Jr: Building a Tiered Approach to *in vitro* Predictive Toxicity Screening: A Focus on Assays with *In Vivo* Relevance *Comb Chem High Throughput Screen* 2010; 13, 188-206.
 7. Wernsdorfer W H., Sabariah I and Chan KL, Congpuong K, Wernsdorfer G: Activity of *Eurycoma longifolia* root extract against *Plasmodium falciparum* in vitro. *Wien Klin Wochenschr* 2009; 121: 23 - 26.
 8. Chan KL, Choo CY, Noor Rain A and Zakiah I: Antiplasmodial studies of *Eurycoma longifolia* Jack using the lactate dehydrogenase assay of *Plasmodium falciparum*. *J Ethnopharmacol* 2004; 92: 223 - 227.
 9. Kuo PC, Damu A G, Leeb KH and Wua TS: Cytotoxic and antimalarial constituents from the roots of *Eurycoma longifolia*. *Bioorg Med Chem* 2004; 12: 537 - 544.
 10. Tee TT, Cheah YH and Azimahtol Hawariah L P: F16, a fraction from *Eurycoma longifolia* jack extract, induces apoptosis via a caspase-9-independent manner in MCF-7 Cells. *Anticancer Res* 2007; 27: 3425 - 3430.
 11. Ueda Jy, Tezuka Y, Banskota A H, Tran QL, Tran Q K, Harimaya Y, Saiki I and Kadota S: Antiproliferative activity of Vietnamese medicinal plants. *Biol Pharm Bull* 2002; 25: 753 - 760.
 12. Nurkhasanah M and Azimahtol Hawariah LP: Eurycomanone induces apoptosis through the up- regulation of p53 in human cervical carcinoma cells. *J Cancer Mol* 2008; 4: 109 - 115.
 13. Teh CH, Morita H, Shiota O and Chan KL: 2,3-Dehydro-4a-hydroxylongilactone, a novel quassinoid and two known phenyl propanoids from *Eurycoma longifolia* Jack. *Food Chem* 2010; 120: 794 - 798.
 14. S.M. Evans SM, Casartelli A, Herreros E, D.T. Minnick DT, Day C, George E and Westmoreland C: Development of a high throughput in vitro toxicity screen predictive of high acute in vivo toxic potential. *Toxicology in Vitro* 2001; 15: 579 –584.
 15. Bhat R, and Karim A A: Tongkat Ali (*Eurycoma longifolia* Jack): A review on its ethnobotany and pharmacological importance. *Fitoterapia* 2010; 8:1669 – 1679.
 16. Tongkat Ali extract, side effects, supplement dosage, benefits, safety, research studies and honest review, influence on testosterone levels available at http://www.raysahelian.com/tongkat_ali.html.

How to cite this article:

Al-Salahi OSA, Zaki AH, Chan KL, Shah AM, Abdullah WZ, Yusoff NM: The *in-vivo* effects of partially purified sub-fraction (Taf2) of the crude Methanolic Extract of *Eurycoma longifolia* Roots on the Haematological, Biochemical and Histology Parameters. *Int J Pharm Sci Res*, 2012; Vol. 3(9): 3101-3105.