



Received on 27 June, 2014; received in revised form, 28 August, 2014; accepted, 29 October, 2014; published 01 February, 2015

IDENTIFICATION OF ANTI HYPERLIPIDEMIC ACTIVITY OF CERIUM OXIDE NANO PARTICLES IN RAT MODEL

R. Narasimha Naik ^{*1}, S. Tirupati Rao ², D. Durga Rao ³, K. Ramalingeswara Rao ⁴ and T. Mohan Rao ³

Department of Pharmacology ¹, Department of Pharmaceutical biotechnology ², Department of Pharmaceutics ³, Department of Pharmaceutical Chemistry ⁴, Vagdevi college of Pharmacy, Gurazala, AP, India

Keywords:

Cerium oxide, VLDL, HDL, LDL, Wistar rats

Correspondence to Author:

Ratla. Narasimha Naik

Assistant Professor,
Department of Pharmacology,
Vagdevi College of Pharmacy,
Gurazala - 522415, Andhra Pradesh,
India.


E-mail: narasimhamp09@gmail.com

ABSTRACT: Cerium oxide is an oxide of the rare earth metal which is widely used for several disorders. However, there are no complete toxicity studies done on it. The purpose of present study is to evaluate acute and Anti-hyper lipidemic activity of cerium oxide nano particles on Wistar albino rats. In this study, Cerium oxide was administered to six rats in different groups in different concentrations (100mg/kg and 200mg/kg) observed for 14 days. After the course, blood was collected and it was calculated for biochemical parameters like serum triglycerides, serum cholesterol, Very low density lipoprotein cholesterol (VLDL), Serum HDL cholesterol, Serum LDL cholesterol levels in the test and standard group of animals which were compared with ccl₄ induced group of animals. The results showed that the mechanism of action of anti-hyper lipidemic activity of Cerium oxide nano particles on dose dependent manner.

INTRODUCTION: Hyperlipidimia is a highly predictive risk factor for atherosclerosis, coronary artery disease, and cerebral vascular diseases. Atherosclerosis of arteries is a generalized disease of the arterial network known as a progressive and silent killer disease characterized by the formation of lesions called atherosclerosis plaques in the walls of large and or medium sized coronary arteries and which reduces blood flow to the myocardium - called coronary artery disease (CAD). Abundant evidence links Hyperlipidimia to atherosclerosis. Clinical trials showed conclusively that lowering serum cholesterol reduces morbidity and mortality from CAD in patients with established CAD and also reduces new CAD events and mortality in patients without established CAD.

Condiments, medicinal plants, fruits used in day-to-day preparation of food in Indian kitchens have been identified as hypolipidemic in Ayurveda.

Diabetes mellitus (DM) is a group of syndrome characterized by hyperglycaemia and altered metabolism of carbohydrates, lipids and proteins. Chronic hyperglycaemia during diabetes causes glycation of body proteins that in turn leads to secondary complications affecting eyes, kidneys, nerves and arteries. Increasing evidences from both experimental and clinical studies suggest that oxidative stress plays a major role in the pathogenesis of DM. Free radicals are formed disproportionately in diabetes by glucose oxidation, non-enzymatic glycation of proteins and the subsequent oxidative degradation of glycated proteins. Abnormally high level of free radicals and the simultaneous decline in antioxidant defense mechanisms may lead to the damage of cellular organelles and enzymes, increased lipid peroxidation and development of insulin resistance. Current drugs used for the treatment of diabetes are

<p>QUICK RESPONSE CODE</p> 	<p>DOI: 10.13040/IJPSR.0975-8232.6(2).728-32</p>
<p>Article can be accessed online on: www.ijpsr.com</p>	
<p>DOI link: http://dx.doi.org/10.13040/IJPSR.0975-8232.6(2).728-32</p>	

associated with several side effects and hence there is need for effective, safe and better oral hypoglycaemic agents. In the indigenous system of medicine, Ayurveda, a mention has been made on a number of plants for controlling diabetes but only a few have been scientifically evaluated and the active principles are isolated¹.

Nano medical approaches to drug delivery centre on developing nano scale particles or molecules to improve drug bioavailability. Bioavailability refers to the presence of drug molecules where they are needed in the body and where they will do the most good. Drug delivery focuses on maximizing bioavailability both at specific places in the body and over a period of time. This can potentially be achieved by molecular targeting by nano engineered devices. It is all about targeting the molecules and delivering drugs with cell precision. More than \$65 billion are wasted each year due to poor bioavailability. *In vivo* imaging is another area where tools and devices are being developed. Using nano particles contrast agents; images such as ultrasound and MRI have a favourable distribution and improved contrast. The new methods of nano engineered materials that are being developed might be effective in treating illnesses and diseases such as cancer².

MATERIALS AND METHODS:

Selection of animal

Healthy male and female Wister albino rats at 8 weeks of age the preferred rodent's species is the rat although other rodent species may be used. Normally female rats are used. This is because literature survey of conventional LD₅₀ tests shows that usually there is little difference in sensitivity between sexes, but in those cases where differences are observed, females are generally slightly more sensitive. Healthy young adult animals of commonly used laboratory strains should be employed. Females should be nulliparous and non pregnant. At the commencement of its dosing, each animal should be between 8 and 12 weeks old and its weight should be fall in an interval within $\pm 20\%$ of the mean initial weight of any previously dosed animals.

Housing and feeding conditions

The temperature in the experimental animal room should be 22°C ($\pm 3^\circ\text{C}$). Although the relative

humidity should be at least 30% and preferably not exceed 70% other than during room cleaning the aim should be 50-60%. Lighting should be artificial, the sequence being 12 hrs light and 12 hrs dark. The animals are housed individually. Diet contains 22.28% of protein, 5.58% of total oil, 3.86% of dietary fibres, 9.12% of moisture, 0.13% of salt, 3.69% of ash, and 55.44% of carbohydrates.

Preparation of animals

The animals are randomly selected, marked to permit individual identification, and kept in their respective cages for at least 5 days prior to dosing to allow for acclimatization to the laboratory conditions.

Experimental design

By using Albino Wister rats five groups of six animals in each group, the animals are separated randomized and grouped, all group of animals are served up to 14 days treatment

Group I --- Normal distilled water,

Group II --- carbon tetra chloride (1ml/kg, s.c)

Group III --- carbon tetra chloride + standard drug (Silymarin, 60mg/kg, p.o),

Group IV --- carbon tetra chloride + test drug (cerium oxide 1/10th, p.o),

Group V --- carbon tetra chloride + test drug (cerium oxide 1/20th, p.o)

The animals were kept starved over night on 14th day of experiment³. On the next day the blood was collected by retro orbital puncture and the animals were sacrificed by decapitation. The liver and kidney in each case were dissected out, blotted of blood, washed in saline and stored in a freezer. The clear serum was separated by centrifugation at 2500 rpm for 10 min serum were used for various biochemical estimations like serum triglycerides, serum cholesterol, High density lipoproteins, Very low density lipoprotein cholesterol (VLDL), Serum total cholesterol, Serum HDL cholesterol, Serum triglycerides, Serum LDL levels were estimated by using standard reagent kits.

RESULTS:

Acute toxicity study Acute toxicity studies were conducted in albino mice by using OECD-423

guidelines, in dose increasing method for Cerium oxide Nano particles. Animals are treated with higher dose of cerium oxide 2000 mg/kg. It was found that even at 2000mg/kg dose did not manifest any significant abnormal signs, mortality,

behavioral changes, body weight changes; Toxicity signs such as Tremors, Salivation, Diarrhea and Lethargy were not observed. Confirming practically these are not has toxic activity.

TABLE 1: BEHAVIORAL OBSERVATIONS FOR TEST GROUP (2000 mg/kg BODY WEIGHT) OF CERIUM NANO PARTICLES

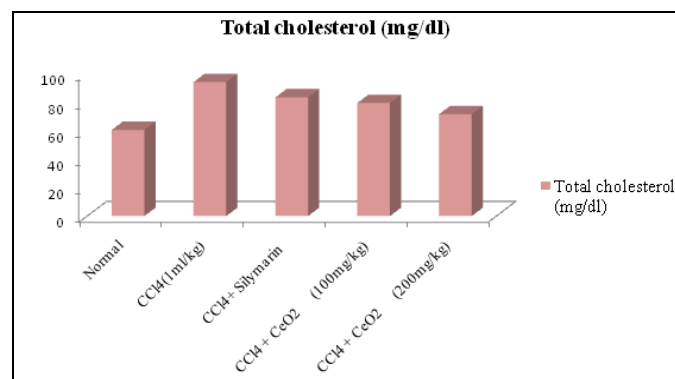
Observations	30 min	1 hr	4 hrs	8 hrs	24 hrs	48hrs
Skin & Fur	Normal	Normal	Normal	Normal	Normal	Normal
Eyes	Normal	Normal	Normal	Normal	Normal	Normal
Mucous membrane	Normal	Normal	Normal	Normal	Normal	Normal
Behavioral pattern	Normal	Normal	Normal	Normal	Normal	Normal
Tremors	Nil	Nil	Nil	Nil	Nil	Nil
Salivation	Normal	Normal	Normal	Normal	Normal	Normal
Diarrhea	Nil	Nil	Nil	Nil	Nil	Nil
Lethargy	Nil	Nil	Nil	Nil	Nil	Nil
Sleep	Normal	Normal	Normal	Normal	Normal	Normal
Coma	Nil	Nil	Nil	Nil	Nil	Nil

ANTI HYPERLIPIDIMIC ACTIVITY

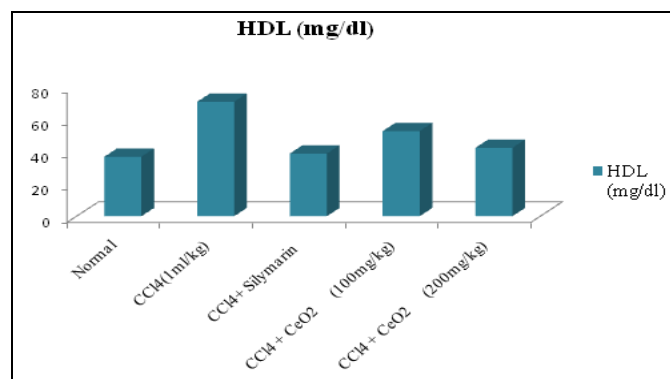
TABLE 2: EVALUATION OF BIOCHEMICAL PARAMETERS IN CONTROL AND TEST ANIMALS

Groups	Total cholesterol (mg/dl)	Triglycerides (mg/dl)	HDL (mg/dl)	LDL (mg/dl)	VLDL (mg/dl)
Normal	60.33 ± 1.35	51.83 ± 0.60	36.83 ± 0.6	20.83 ± 0.3	29.91 ± 0.32
CCl ₄ (1ml/kg)	93.83 ± 0.70*	87.16 ± 0.79*	70.83 ± 0.6*	38.33 ± 0.88*	36.75 ± 0.72*
CCl ₄ + Silymarin	83.16 ± 1.13**	47.5 ± 0.42**	38.83 ± 0.47**	30.33 ± 0.71**	11.0 ± 0.35**
CCl ₄ + CeO ₂ (100mg/kg)	79.16 ± 0.30**	67.83 ± 0.70**	52.66 ± 0.88**	22.0 ± 0.51**	27.83 ± 0.6**
CCl ₄ + CeO ₂ (200mg/kg)	71.33 ± 2.76**	58.0 ± 0.57**	42.33 ± 0.95**	17.83 ± 0.7**	22.16 ± 0.91**

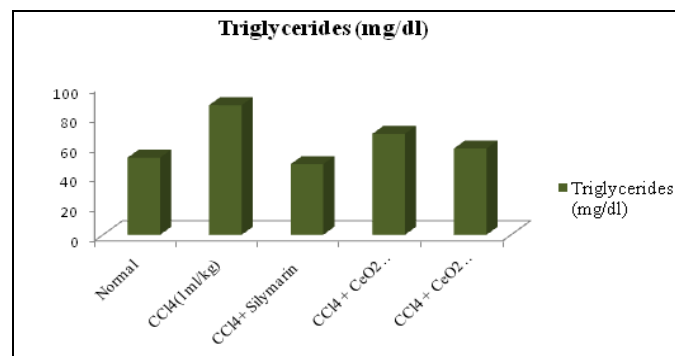
Values represent the mean ± S.E.M., N= 6, *P<0.05 compared with vehicle treated group, **P<0.05 compared with CCl₄ treated group by one way ANOVA, Bonferroni's multiple comparison test



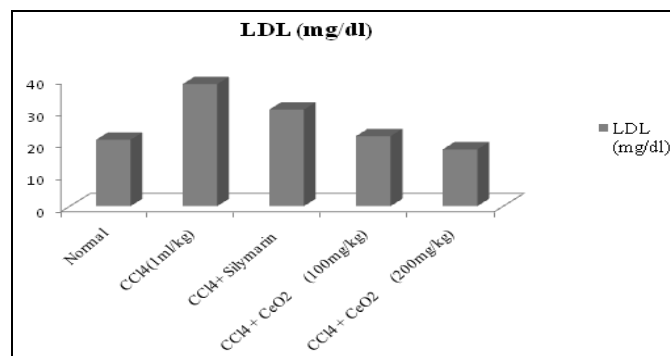
GRAPH 1: TOTAL CHOLESTEROL VALUES IN DIFFERENT GROUPS OF ANIMALS



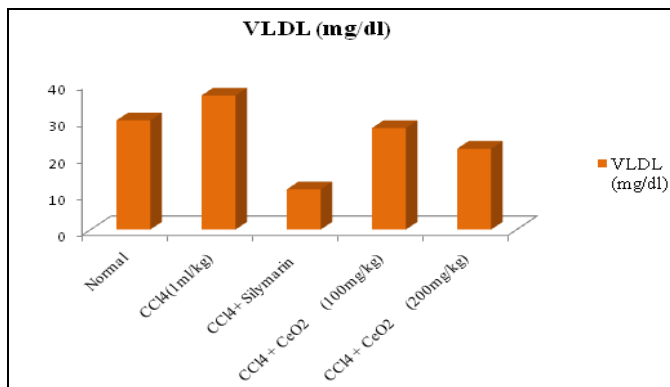
GRAPH 3: HDL VALUES IN DIFFERENT GROUPS OF ANIMALS



GRAPH 2: TRIGLYCERIDES VALUES IN DIFFERENT GROUPS OF ANIMALS



GRAPH 4: LDL VALUES IN DIFFERENT GROUPS OF ANIMALS



GRAPH 5: VLDL VALUES IN DIFFERENT GROUPS OF ANIMALS

HISTOPATHOLOGICAL STUDIES:

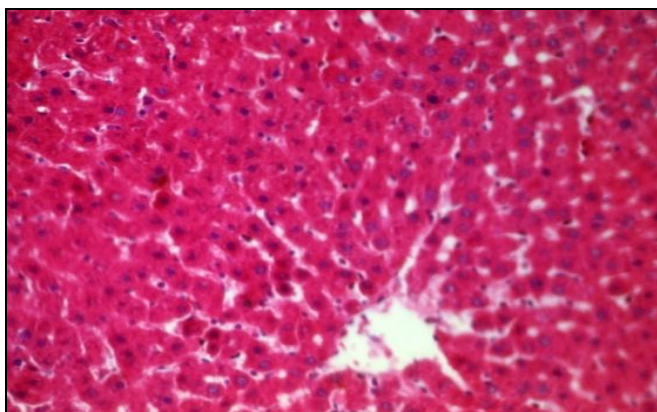


FIG. 1: NORMAL LIVER

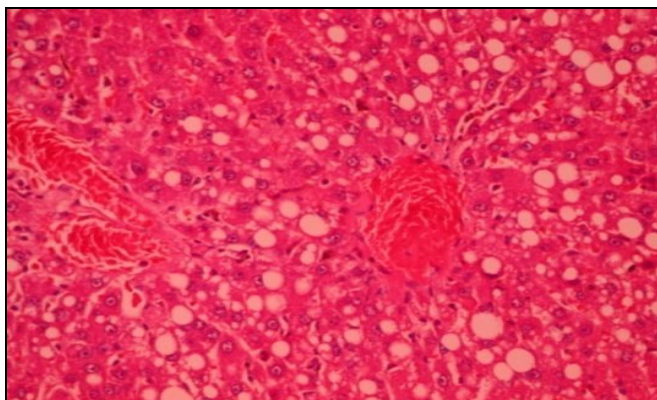


FIG. 2: CCl₄ TREATED LIVER, SEVERE CONGESTION

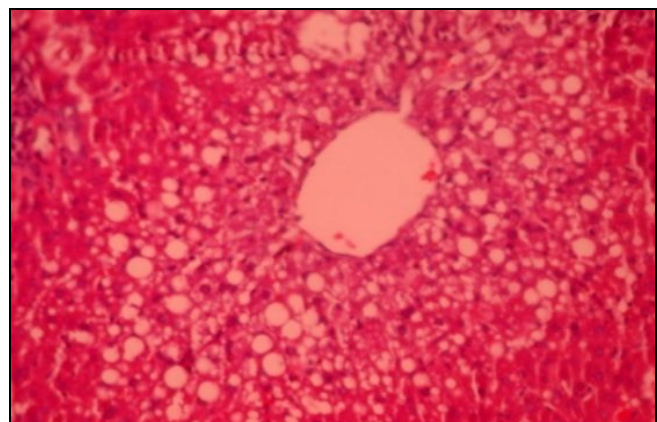


FIG. 3: CCl₄ + CeO₂ (200mg/kg) LIVER FATTY CHANGES OF HEPATOCYTES NORMAL CENTRAL VEIN.

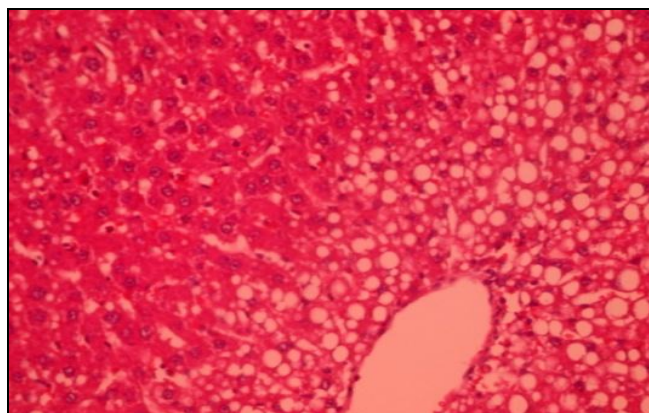


FIG. 4: CCl₄ + SILYMARIN (100mg/kg) LIVER SHOWS NARROW ZONE OF FATTY CHANGE AROUND CENTRAL VEIN.

Ccl₄ treated group animals liver shows severe fatty changes in hepatocytes and severe congestion of blood vessels.

Ccl₄ with Silymarin treated group animals liver shows narrow zone of fatty changes in hepatocytes around central vein and mild congestion of blood vessels.

Ccl₄ with cerium oxide nano particles treated group animals liver shows fatty changes in hepatocytes around central vein and mild congestion of blood vessels.

DISCUSSIONS: It is well established that Ccl₄ induces hepatotoxicity by metabolic activation; therefore it selectively causes toxicity in liver cells maintaining semi-normal metabolic function. Ccl₄ is bio-transformed by the cytochrome P450 system in the endoplasmic reticulum to produce trichloromethyl free radical (•Ccl₃). Trichloromethyl free radical when combined with cellular lipids and proteins in the presence of oxygen form trichloromethyl peroxy radical, which may attack lipids on the membrane of endoplasmic reticulum faster than trichloromethyl free radical⁴. The Ccl₄ has been used as a tool to induce hepatotoxicity in experimental animals⁵. This toxic chemical caused peroxidative degradation in the adipose tissue resulting in fatty infiltration of the hepatocytes⁶. Silymarin also exerts antioxidant and membrane stabilizing activity and attributes important for liver secretion and uptake of plasma lipoproteins and so alter in lipid metabolism.

Concerning the histological effects, liver of Ccl₄-treated animals showed many degenerative changes

including cytoplasmic vacuolization of the hepatocytes, fatty infiltrations, leucocytic infiltrations, congestion of blood vessels, and fibrosis⁷. Similar results were obtained by in albino rats intoxicated with CCl₄. Moreover, the current results are in accordance with those of and who reported that liver injury including marked alteration of the entire liver structures with degenerative changes were observed after CCl₄ administration. Fatty infiltrations were observed in liver of CCl₄ treated rats^{8, 9}. The present study showed Cerium oxide nano particles possess Antihyperlipidemic activity in CCl₄ induced wistar albino rats.

In the present study, treatment with the Cerium oxide nano particles made the SC, STG and VLDL-c levels to more or less towards normalization indicates that CeO₂ significantly (p<0.05) protects the liver injury induced by CCl₄ in dose dependent manner. The above results confirm that the CeO₂ have Antihyperlipidemic activity.

CONCLUSIONS: Acute toxicity studies were conducted in albino mice by using OECD-423 guidelines, in dose increasing method for Cerium oxide nano particles. It was found that even at 2000mg/kg dose had not shown any mortality, confirming practically these are not having toxic activity.

Cerium oxide nano particles exhibit significantly anti-hyper lipidemic effect against CCl₄-induced rats in a dose-dependent manner as compared with that of the reference drug Silymarin. This study also proved anti hyperlipidemic activity in CCl₄

treated animals.

ACKNOWLEDGEMENT: Authors are grateful to Shri Vishnu College of Pharmacy and Institutional Animal Ethical Committee (IAEC) of Shri Vishnu College of Pharmacy for providing animals and facilities to carry out the work.

REFERENCES:

1. Nidhi Sharma, Veena Garg and Arpita Paul: Antihyperglycemic, Antihyperlipidemic and Antioxidative potential of *prosopis cineraria* bark. Indian Journal of Clinical Biochemistry 2010; 25 (2):193-200.
2. Raghendra1, Satyanand Tyagi, Pramod Yadav and Sunanda Saxena: clinical applications of nanomedicines: a review. International Journal of Applied Biology and Pharmaceutical Technology 2010; 2: 660-665.
3. Kazeem, M.I, Bankole, H.A. and Fatai, A.A: Protective effect of ginger in normal and carbon-tetrachloride induced hepatotoxic rats. Scholars Research Library 2011; 2 (1): 1-8.
4. Gini C Kuriakose & G. Muraleedhara Kurup: Antioxidant activity of *Aulosira fertilissima* on CCl₄ induced hepatotoxicity in rats. Indian Journal of Experimental Biology 2008; 46: 52-59.
5. Recknagel R. O., E. A. Glende, J. A. Dolak Jr and R. L. C. Waller: Mechanism of tetrachloride toxicity. Pharmacol. Ther 1989; 43: 139-154.
6. O'Neil, MJ: The merck index: an encyclopedia of chemicals, drugs, and biologicals, 13th edition. Whitehouse Station, NJ: Merck and Co 2001; 89: 342-358.
7. Sakr, S.A., El-Abd, S.F. Mohamed Osman, M., Kandil, A.K., Helmey, M.S: Effect of rosemary on carbon tetrachloride-induced hepatotoxicity in albino rats: Histological and biochemical studies. Egypt. J. Exp. Biol 2010; 6:135-140.
8. Sreelatha S, Padma PR, Umadevi M: Protective effects of *Coriandrum sativum* extracts on carbon tetrachloride-induced hepatotoxicity in rats. Food Chem Toxicol 2009; 47: 702-708.
9. Lodhi G, Singh HK, Pant KK, Hussain Z: Hepatoprotective effects of *Calotropis gigantea* extract against carbon tetrachloride induced liver injury in rats. Acta Pharm 2009; 59(1): 89-96.

How to cite this article:

Naik RN, Rao ST, Rao DD, Rao KR and Rao TM: Identification of Anti Hyperlipidemic Activity of Cerium Oxide Nano Particles in Rat Model. Int J Pharm Sci Res 2015; 6(2): 728-32.doi: 10.13040/IJPSR.0975-8232.6 (2).728-32.

All © 2013 are reserved by International Journal of Pharmaceutical Sciences and Research. This Journal licensed under a Creative Commons Attribution-NonCommercial-ShareAlike 3.0 Unported License.

This article can be downloaded to **ANDROID OS** based mobile. Scan QR Code using Code/Bar Scanner from your mobile. (Scanners are available on Google Playstore)