



Received on 01 October, 2013; received in revised form, 11 February, 2014; accepted, 03 May, 2014; published 01 June, 2014

## CONSERVATION OF MEDICINAL PLANT *BRYOPHYLLUM PINNATUM* (LAM.) KURZ BY *IN VITRO* NODAL CULTURE

Chandra Gurnani\*<sup>1</sup>, Vikram Kumar<sup>2</sup>, Shinam Mukhija<sup>1</sup>, Poonam Narula<sup>1</sup> and Rajat Bhola<sup>3</sup>

Department of Biotechnology<sup>1</sup> and Microbiology<sup>2</sup>, Maharshi Dayanand College, Sriganganagar, Rajasthan, India

Department of Life science<sup>3</sup>, Government Lohia College, Churu, sardarshahar, Rajasthan, India

### Keywords:

*Bryophyllum pinnatum*, Ayurvedic, Astringent, Carminative

### Correspondence to Author:

**Chandra Gurnani**

Department of Biotechnology,  
Maharshi Dayanand College,  
Sriganganagar, Rajasthan, India

**E-mail:** chandrabiotech9@gmail.com

**ABSTRACT:** *Bryophyllum pinnatum* is widely used in ayurvedic system of medicine as astringent, analgesic, carminative and also useful in diarrhoea and vomiting. It is naturalized throughout the hot and moist parts of India. The leaves of *B. pinnatum* have a variety of uses in the traditional system of medicine in India. They are eaten for diabetes, diuresis, dissolving kidney stones, respiratory tract infections, as well as applied to wounds, boils, and insect bites. It is useful for preventing alcoholic, viral and toxic liver damages. The aqueous extract of this plant have shown anti-inflammatory, anti-diabetic, anti-tumor and cutaneous leishmanicidal activities. Maximum percent shoot and root regeneration took place in A3 and A16 set respectively which was 80±1.45 % for the former and 75±1.84 % for the latter. The shoot regeneration which was acquired in set A3 was statistically highly significant while regeneration in A15 was more and statistically highly significant.

**INTRODUCTION:** Plants are important source of medicines and play a key role in world health<sup>1</sup>. In modern medicine, plants are used as sources of direct therapeutic agents, as models for new synthetic compounds and as taxonomic marker for discovery of new compounds. They serve as a raw material base for the elaboration of more complex semisynthetic chemical compounds<sup>2</sup>.

The synthesis of bioactive compounds chemically is difficult because of their complex structure and high cost<sup>3</sup>.

Herbal preparations from field grown plants are susceptible to infestation by bacteria, fungi and insects that can alter the medicinal content of the preparation<sup>4</sup>. Supply of plants for traditional medicines is failing to satisfy the demand<sup>5</sup>. An efficient and most suited alternative solution to the problems faced by the phyto-pharmaceutical industry is development of *in vitro* systems for the production of medicinal plants and their extracts. The *in vitro* propagated medicinal plants furnish a ready source of uniform, sterile and compatible plant material for biochemical characterization and identification of active<sup>6,7</sup>.

Plant tissue culture techniques have been increasingly applied to many medicinal plants in particular for mass propagation, conservation of germplasm and production of bioactive compounds and for genetic improvement.

	<b>QUICK RESPONSE CODE</b> <b>DOI:</b> 10.13040/IJPSR.0975-8232.5(6).2406-11
	<b>Article can be accessed online on:</b> <a href="http://www.ijpsr.com">www.ijpsr.com</a>
<b>DOI link:</b> <a href="http://dx.doi.org/10.13040/IJPSR.0975-8232.5(6).2406-11">http://dx.doi.org/10.13040/IJPSR.0975-8232.5(6).2406-11</a>	

Large scale plant tissue culture is found to be an attractive approach to the traditional methods of plantations because it offers controlled supply of biochemical independent of plant availability and more consistent product quality<sup>8</sup>.

Genus *Bryophyllum* of the family Crassulaceae is a valuable medicinal as well as ornamental plant. These plants are cultivated as ornamental house plants and rock or succulent garden plants<sup>9</sup>. *B. pinnatum* is the air plant, miracle leaf or life plant is a native to Madagascar. It is a popular houseplant and has become naturalized in temperate regions of Asia, The Pacific and Caribbean, Australia, New Zealand, West-Indies, Macaronesia, Mascarenes, Galapagos, Melania, Polynesia and Hawaii<sup>10</sup>.

*Bryophyllum pinnatum* is used in ethno medicine for treatment of earache, burns, abscesses, ulcer, insect bites, diarrhea and Lithiasis<sup>11</sup>. It has been recorded in Trinidad and Tobago as being used as traditional treatment for hypertension and for the treatment of Kidney stones<sup>12</sup>. In South Eastern Nigeria, this herb is used to facilitate the dropping of the placenta of a newly born baby<sup>13</sup>. It is useful to prevent alcoholic liver damage, viral liver damage, and toxic liver damage and to treat ailments such as infections, rheumatism and inflammation.

Alcoholic extracts of *B. pinnatum* showed antimicrobial activity against a number of Gram (+ve) and (-ve) bacterial strains<sup>14</sup>. Three compounds make *Bryophyllum* their unique medicinal value that is Bryophilin A which shows anti-tumour activity others Bersaldegenin-3-Acetate and Bryophilin C which shows insecticidal properties<sup>15</sup>. It can also lower blood pressure, blood sugar levels showed antioxidant effects which makes it health strengthening agents. Its roots contain glycosides, essential oils and alkaloids.

Now it becomes endangered plant which needs to be conserved as well as explored for its significant green chemistry<sup>16</sup>.

Thus, the aim of the present study was to propagate endangered plant *Bryophyllum pinnatum* by tissue culture for conservation & sustainable development in present scenario.

## MATERIALS & METHODS:

**Study site:** The study was conducted in the Department of Biotechnology, Maharshi Dayanand College, Sri Ganganagar district of Rajasthan, India. Geographically it is located Between Latitude 28.4 to 30.6 and Longitude 72.2 to 75.3. Total area of Sri Ganganagar is 11, 15,466 hectares. It is surrounded by on the east by Hanumangarh District on the south by Bikaner District, and on the west by Bahawalnagar district of Pakistan and on north by Punjab.

**Collection of Explant:** In present study, leaves were used as explant. Leaves of *B. pinnatum* were collected from the garden of Maharishi Dayanand college, Sriganganagar under the supervision of Dr. Sudesh Dhingra, Head of Department Biotechnology and transported to Biotechnology lab for the further processing.

**Surface Sterilization:** Leaves were washed under tap water to remove sand and dust particles and then thoroughly washed with Teepol for about 10 minutes then leaves were rinsed with tap water to make it free from detergent. It was followed by dipping of the leaves in 0.1% mercuric chloride for 5-6 minutes. The leaves were then washed with autoclaved water for at least three times to remove the smell of bleaching solution<sup>17</sup>.

**Inoculation of Explant:** Sections of Equal sizes (1x1 cm<sup>2</sup>) were cut from these leaves and were grown on MS<sup>18</sup> media supplemented with various concentrations of BAP (0.5-2.5mg l<sup>-1</sup>), IBA (0.5-2.5mg l<sup>-1</sup>) and NAA (0.5-2.5mg l<sup>-1</sup>).

**Shoot & Root induction:** Surface sterilized nodal explants were cut as described by Spripaoraya<sup>19</sup>. The nodal explants of *Bryophyllum pinnatum* were cultured on Murashige and Skoog medium supplemented with 3% w/v Sucrose, different concentrations of BAP, NAA, and IBA which is solidified with 0.8% Agar. The regenerated shoots were separated individually and transferred on MS media containing different concentrations of NAA (0.5-2.5mg/l) or IBA (0.5-2.5mg/l) for proliferation of roots. The pH of media adjusted to 5.8 with 1N NaOH, 1N HCl and autoclaved at 121°C temperature with 15 lbs pressure for 20 minutes.

Inoculated explants were kept under control environment with 2500 lux light intensity at temperature of  $25\pm 2^\circ\text{C}$  for 16 hours photoperiod<sup>18</sup>. Data were collected after two weeks including response of shoot and root regeneration (**Table 1**).

**Hardening & Acclimatization:** Rooted plantlets were carefully removed from the culture tubes and their roots were thoroughly washed under running tap water and cleaned with fine brush to remove adhered agar. After that the plantlets were covered with sterilized cotton wetted with half strength MS medium for 24 hours in culture room followed by the treatment of Bavistin (0.2% for 10 minutes) to prevent fungal contamination. Finally plantlets were transferred to pots containing sterilized soil, vermiculite and perlite in equal proportion. Pots were kept in greenhouse with 90% humidity and temperature  $26\pm 2^\circ\text{C}$ <sup>20</sup>.

**Statistical Analysis:** Data were collected on shoot and root regeneration. The experiments were laid out in completely randomized design (CRD). Each

treatment was replicated thrice and 10 test tubes were used per replication. The data collected was analyzed by SPSS software (Version 13.00) and the means were compared by one way ANOVA.

**RESULTS&DISCUSSION:** The investigation has been carried out to infer the influence of different growth regulators on *Bryophyllum pinnatum*. The exploration was conducted on 17 sets which were imparted with various concentrations of BAP (0.5-2.5mg/l), NAA (0.5-2.5mg/l) and IBA (0.5-2.5mg/l) growth regulators. Besides, the range of various growth regulators was maintained according to the given table. These experimental sets were further tested for pattern of growth occurred in shoot regeneration as well as root regeneration (**Plate 1**). As shoot proliferation and multiplication was perceived within 8-10 days. Hence the outcome which was interpreted from the above consideration reveals that maximum percent shoot and root regeneration took place in A3 and A16 set respectively which was  $80\pm 1.45\%$  for the former and  $75\pm 1.84\%$  for the latter as in **Table 1**.

**TABLE 1: SHOWING SHOOT AND ROOT REGENERATION**

Code	Concentration of Growth Regulators in mg/l			Shoot regeneration (%)	Root regeneration (%)
	BAP	NAA	IBA		
A1	0.5	0.5	0.5	23±1.52a	10±0.66a
A2	1.0	0.5	0.5	40±0.88a	20±0.33a
A3	1.5	0.5	0.5	80±1.45b	32±1.52b
A4	2.0	0.5	0.5	68±0.88b	25±2.33b
A5	2.5	0.5	0.5	60±1.45b	10±0.57b
A6	0.5	1.0	0.5	30±0.88a	28±1.45a
A7	0.5	1.5	0.5	40±2.33c	35±1.52c
A8	0.5	2.0	0.5	30±0.33b	45±0.0b
A9	0.5	2.5	0.5	35±3.17a	22±1.52a
A10	0.5	0.5	1.0	30±1.45a	20±1.76a
A11	0.5	0.5	1.5	40±0.0b	25±0.33b
A12	0.5	0.5	2.0	46±1.52c	40±4.04c
A13	0.5	0.5	2.5	41±0.88a	22±1.45a
A14	0.5	1.0	1.0	35±2.72a	24±0.57a
A15	0.5	1.5	1.5	42±1.66a	70±1.52a
A16	0.5	2.0	2.0	40±1.20c	75±1.84c
A17	0.5	2.5	2.5	50±0.57a	60±2.33a

Values shown are Mean±S.E. Values with different letters within columns differ significantly at  $p=0.05$ ; a- Significant; b- Highly significant; c-Non significant

Further on the statistical analysis, Mean±S.E. and ANOVA was procured at .05 probability level of significance which lead to our understanding showed remarkable difference of Significance,

Highly significance and insignificant. This further leads to a conclusion that the shoot regeneration which was acquired in set A3 was statistically highly significant while regeneration in A15 was

more and statistically highly significant. The level of significance and highly significance is indicated in the table which emphasize on the efficiency of

supplied growth regulators. To enlightened the topic more precisely results are also presented graphically as in **Plates 2, 3 & 4**.

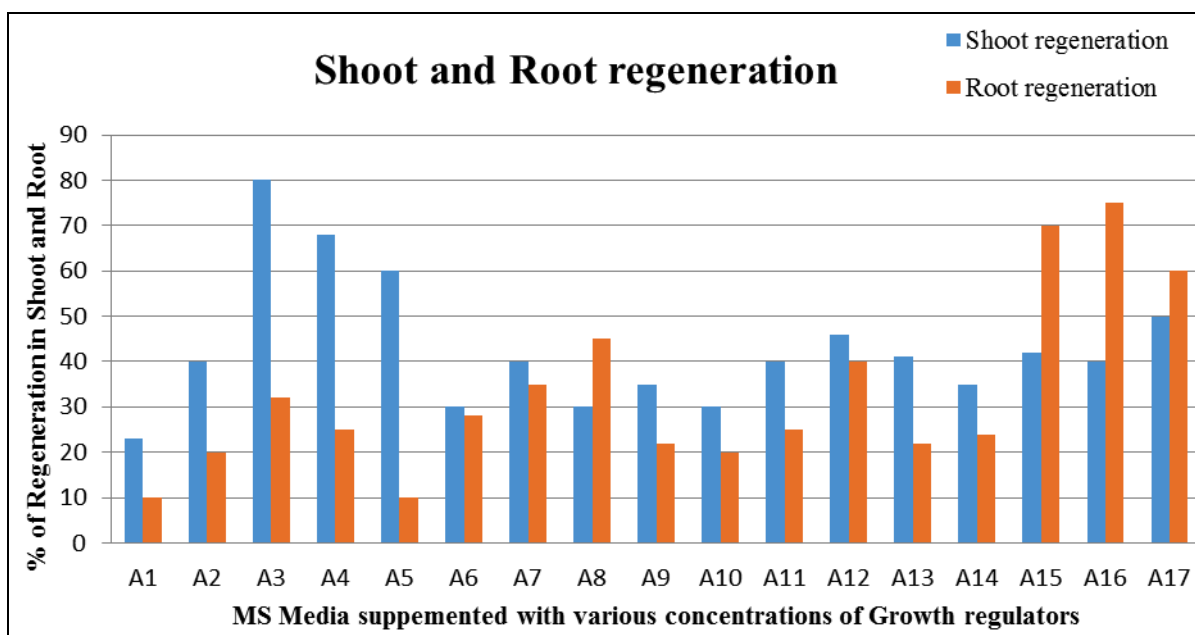


PLATE 1: IN VITRO PROPAGATION OF *BRYOPHYLLUM PINNATUM*

Different concentrations of BAP, IBA and NAA had highly significant effect on the shoot and root regeneration. Barik<sup>21</sup> had obtained direct shoot regeneration in combination of BAP and NAA in *Lathyrus sativus*. A cytokinin supplement to MS was essential to induce shoot proliferation. A combination of cytokinin and auxin improves the percentage of shoot regeneration as well as the shoot number and shoot length.

Similar type of response was observed in medicinal plants like *W. somnifera*<sup>22, 23</sup>, *Abutilon indicum*<sup>24</sup>, *Bryophyllum pinnatum*, *Bryophyllum daigremontianum*<sup>25</sup>. Growth regulators added to the growth media during the shoot proliferation stage played a definitive role in growth enhancement of *Bryophyllum* cultured *in vitro*.



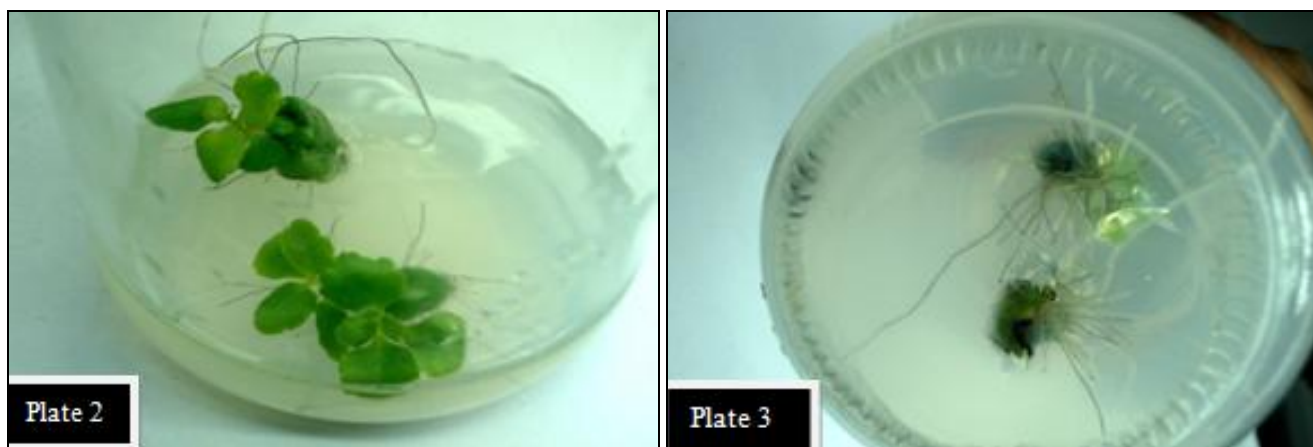


PLATE 2 AND 3: SHOWING SHOOT AND ROOT REGENERATION

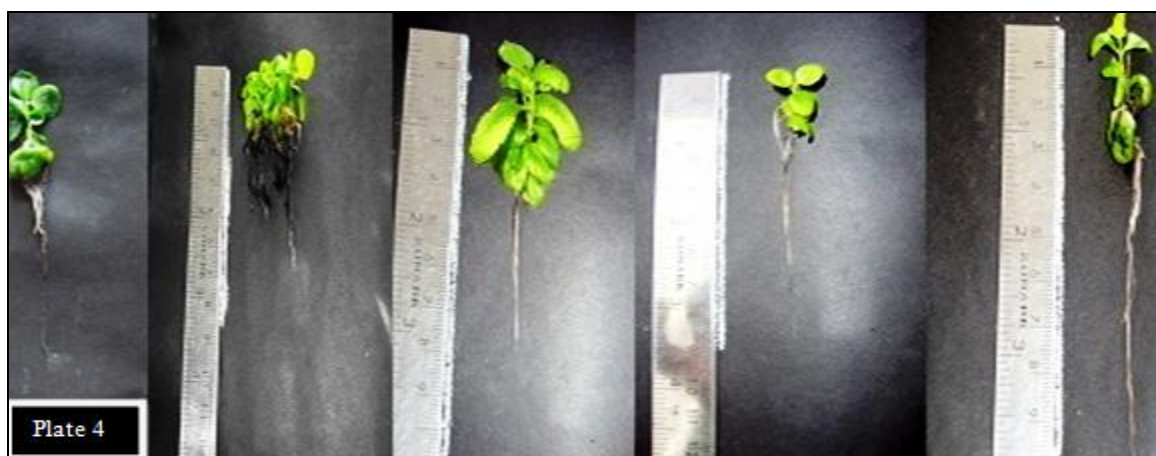


PLATE 4 SHOWING SHOOT AND ROOT LENGTH

Duane and Riserberg<sup>26</sup> found that *Bryophyllum pinnatum* produced 2.8 times more shoots in  $10^{-6}$ M BAP as compared to water. Karapoff<sup>27</sup> reported that bud initiation was stimulated by BAP and he obtained average of  $1.18 \pm 0.82$  roots in  $10^{-6}$  M BAP. IBA has been reported to have a stimulatory effect on root induction in many medicinal plant species including *Withania somnifera*<sup>28</sup>, *Centella Asiatic*<sup>29</sup> and Ginger<sup>30</sup>. The rooted plants were acclimatized ex vitro in the green house. The *in vitro* grown plants performed well under field conditions and they were morphologically identical to the mother plants. Assays of acclimatization carried out by other authors working with different species of *Bryophyllum* showed that plantlets obtained in vitro are easily acclimatized<sup>31, 32</sup>.

Micropropagation is more rapid, continuous and efficient than propagation *via* conventional cutting because it can supply uniform and consistent plant material for investigations of important secondary

metabolites produced by this species, as well as its use as an ornamental plant. The procedure reported in this paper suggests that tissue culture could be a commercially feasible method for *Bryophyllum* propagation and will also considerably facilitate large-scale propagation and conservation of this medicinally important plant species.

**CONCLUSION:** Eventually all in all it can be deduce from the above findings that tissue culturing method employs Micropropagation has been extensively used in elaborating the utility of plant.

*Bryophyllum pinnatum* justify its use for the production of secondary metabolites for research to be carried out efficiently.

**ACKNOWLEDGEMENT:** The authors are grateful to the Biotechnology and Microbiology Department Maharshi Dayanand (PG) College for extending all the laboratory facilities towards successful completion of this investigation.

## REFERENCES:

- Constabel CP, Yip L, Patton JJ and Christopher ME: Polyphenol oxidase from hybrid poplar cloning and expression in response to wounding and herbivory. *Plant Physiol* 2000; 124: 285–296.
- Akerele O: WHO guidelines for the assessment of herbal medicine. *Fitoterapia* 1992; 62(2):99-110.
- Shimomura K, Yoshimatsu K, Jaziri M and Ishimaru K: Traditional medicinal plant genetic resources and biotechnology applications. In: Watanabe K; Pehu ERG, eds. *Plant biotechnology and plant genetic resources for sustainability and productivity*. Austin, TX: R. G. Landes Company and Academic Press Inc 1997; pp 209–225.
- Murch SJ, Krishnaraj S and Saxena PK: Phytopharmaceuticals: mass-production, standardization and conservation. *Herbal Med* 2000; 4(2):39-43.
- Cunningham SD and Berti WR: Recommendations of contaminated soil with green plants: An overview; *In vitro Cellular and Development Biology*. Plant 1993a; 29:1003 and The remediation of contaminated soils with green plants: An overview; *In Vitro Cell. Devel. Biol.-J.Tissue Cult. Assoc.* 1993b; 29:207-212.
- Wakhlu AK and Bajwa PS 1986: Regeneration of uniform plants from somatic embryos of *Papaver somniferum* (opium poppy). *Phytomorphology* 1986; 36:101–105.
- Miura Y, Fukui H and Tabata M: Clonal propagation of chemically uniform fennel plants through somatic embryoids. *Planta Med* 2012; 53:92–94.
- Sajc L, Grubisic D and Vunjan-Novakovic .: Bioreactors for plant engineering: an outlook for further research. *Biochem.Eng. J.* 2000; 4: 89-99.
- Kulka RG, Kamgang R, Mboumi RY, Fondjo AF, Tagne MA, Ndille GP and Yonkeu JN: Hormonal control of root development on epiphyllous plantlets of *Bryophyllum (Kalanchoe) marnierianum*: role of auxin and ethylene. *J Exp Bot.* 2008; 59(9):2361-70.
- Zamora AB, Gruezo SS and Siar SV 1998: Somaclonal variation: Breeder's tool for recovering potencial cultivars in ornamentals (*Kalanchoe*). Annual Scientific Conference of the federation of Crop Science Societies of the Philippines, Cebu City (Philippines) (Received for publication 3, 2009).
- Chopra RN, Nayar SL and Chopra IC: Glossary of Indian Medicinal Plants vol. 1. Council of Scientific and Industrial Res, New Delhi 1956; pp 330.
- Tedge H, Mohammad E, Asres K and Mariam G: Antimicrobial activities of some selected traditional Ethiopian medicinal plants used in the treatment of skin disorders. *Journal of Ethnopharmacology* 2005; 100(1/2): 168-175.
- Dalziel JM: The useful Plants of West Tropical Africa. Grown Agents for Oversea Governments and Administrations, London 1955; pp.28, 53, 415.
- Akinsulire OR, Aibinu IE, Adenipekun T, Adelowotan T and Odugbemi T: *In vitro* anti-microbial activity of crude extract from plants *Bryophyllum pinnatum* and *Kalanchoe crenata*. *Afr J Tradit Complement Altern Med* 2007; 4(3):338-44.
- Supratman U, Fujita T, Akiyama K, Hayashi H, Murakami A, Sakai H, Koshimizu and Ohigashi H: Anti-tumor promoting activity of Bufadienolides from *Kalanchoe pinnata* and *Kalanchoe daigremontiana x tubiflora*. *Bioscience, Biotechnology and Biochemistry* 2001; 65(4): 947-949.
- Pattewar SV: *Kalanchoe pinnata*: Phytochemical and Pharmacological Profile. *International Journal of Pharmaceutical Sciences and Research* 2012; 3(4):993-1000.
- Shagufta N, Sumera J, Saiqa I and Aamir A: An Efficient Protocol for Rapid Multiplication of *Bryophyllum pinnatum* and *Bryophyllum daigremontianum*. *Pak. J. Bot* 2009; 41(5):2347-2355.
- Murashige T and Skoog F: A revised medium for rapid growth and biomass with tobacco tissue cultures. *Physiology Plant* 1962; 15:473-497.
- Sripaoraya S, Marchant R, Power JB and Davey MR: Plant regeneration by somatic embryogenesis and organogenesis in *Citrus reticulata* Blanco. *In Vitro Cell. and Dev. Biol* 2003; 39: 450–4.
- Nagpal A, Virk GS, Vijay and Savita: Effect of Explant Type and Different Plant Growth Regulators on Callus Induction and Plantlet Regeneration in *Citrus jambhiri* Lush. *Environ. We Int. J. Sci. Tech* 2010; 5:97-106.
- Barik DP and Mohapatra U and Chand PK: High frequency *in vitro* regeneration of *Lathyrus sativus* L. *Biologia Plantarum* 2011; 49(4):637-639.
- Kulkarni AA, Thengane SR and Krishnamurthy KV: Direct *in vitro* regeneration of leaf explants of *Withania somnifera* (L.) Dunal. *Plant Science* 2011; 119:163-168.
- Saritha KV and Naidu CV: *In vitro* flowering of *Withania somnifera* Dunal.—An important antitumor medicinal plant. *Plant Science* 2007; 172:847–851.
- Rout JR, Mishra M, Das R and Sahoo SL: *In vitro* Micropropagation of *Abutilon indicum* L. through Leaf Explants. *Plant Tissue Cult. & Biotech* 2009; 19(2):177- 184.
- Naz S, Javad S, Ilyas S and Ali A: An efficient protocol for rapid multiplication of *Bryophyllum pinnatum* and *Bryophyllum daigremontianum*. *Pak. J. Bot* 2009; 41(5):2347-2355.
- Duane FH and Riserberg LH: Hormonal regulation of epiphyllous buds release in development in *Bryophyllum calycinum*. *American Journal of Botany* 1983; 70(6):912-915.
- Karapoff JA: Hormones and early *In vitro* development of epiphyllous propagules on *Bryophyllum calycinum*. *American Journal of Botany* 2012; 69(3):348-355.
- Siddique NA, Bari MA, Shahnewaz S, Rahman MH, Khan MSI and Islam MS: Plant regeneration of *Withania somnifera* (L.) Dunal (Ashwagandha) from nodal segments derived callus an endangered medicinal plant in Bangladesh. *Journal of Biological Science* 2004; 4(2):219-223.
- Mohapatra H, Barik DP and Rath SP: *In vitro* regeneration of medicinal plant *Centella asiatica*. *Biologia Plantarum* 2008; 52(2):339-342.
- Sultana A, Hassan L, Ahmad SD, Shah AH, Batool F, Islam MA, Rahman R and Moonmoon S: *In vitro* regeneration of ginger using leaf, shoot tip and root explants. *Pak. J. Bot* 2009; 41(4): 1667-1676.
- Khan S, Naz S, Ali K and Zaidi S: Direct organogenesis of *Kalanchoe tomentosa* (Crassulaceae) from shoot tips. *Pak. J. Bot.* 2006; 38(4):977-981.
- Sanikhani M, Stefan F and Margrethe S: TDZ induce shoot regeneration in various *Kalanchoe blossfeldiana* pollen cultivars in the absence of auxin. *Plant cell, Tissue and Organ Culture* 2006; 85(1):75-82.

**How to cite this article:**

Gurnani C, Kumar v, Mukhija S, Narula P and Bhola R: Conservation of medicinal plant *Bryophyllum pinnatum* (Lam.) Kurz by *in vitro* nodal culture. *Int J Pharm Sci Res* 2014; 5(6): 2406-11. doi: 10.13040/IJPSR.0975-8232.5(6).2406-11