



Received on 11 August 2021; received in revised form, 07 October 2021; accepted, 11 October 2021; published 01 May 2022

## DEVELOPMENT AND *IN-VITRO* EVALUATION OF EMBELIN (A PHYTOCONSTITUENT) LOADED PHYTOSOME COMPLEX

K. M. Priti<sup>\*</sup>, D. K. Vishwakarma and J. N. Mishra

Kailash Institute of Pharmacy & Management, Gorakhpur - 273209, Uttar Pradesh, India.

### Keywords:

Phytosome, Embelin loaded phytosome complex, Soya lecithin, Chitosan, Entrapment efficiency, SEM

### Correspondence to Author:

**Mrs. K. M. Priti**

Kailash Institute of Pharmacy & Management, Gorakhpur - 273209, Uttar Pradesh, India.

**E-mail:** pritigehla8@gmail.com

**ABSTRACT:** Embelin was one of active constituents of *Embelia ribes* Burm. f. Embelin has been reported to possess many pharmacological effects. The studies as was perform to enhance the bioavailability of poorly water soluble embelin, reduce the dose of Embelin, prevent the degradation of Embelin in the GIT. For this, phytosome, a novel drug delivery system, was adopted. Total six Embelin loaded phytosome complex formulations coded as EMBP1, EMBP2, EMBP3, EMBP4, EMBP5 and EMBP6 using soya lecithin and Chitosan in variable ratio were prepared by anti-solvent precipitation method and Rotary evaporation technique. The phytosome was characterized by parameters like percentage yield, particle size determination, entrapment efficiency, scanning electron microscopy (SEM), *in-vitro* release studies and establish drug release kinetic studies. Among six formulations, the Formulation EMBP5 well optimized. EMBP5 exhibits lowest  $345.45 \pm 1.231$  diameter. The entrapment efficiency of Embelin loaded phytosome complex varies from  $64.99 \pm 1.546$  to  $81.78 \pm 1.151\%$ . Embelin loaded phytosome complex formulation (EMBP5) exhibits highest of  $81.78 \pm 1.151\%$  entrapment efficiency. SEM photomicrographs of optimized formulation (EMBP5) of Embelin loaded phytosome complex showed that the phytosomes are less spherical with smooth and rough surface and slightly aggregated. *In-vitro* dissolution study of phytosomes showed extended release pattern. From the data, the release of embelin from Embelin loaded phytosome complex was by fickian diffusion mechanism and followed first order kinetics (concentration dependant).

**INTRODUCTION:** According to WHO, more than 80% people of the world shows their reliability towards herbal medicines. Active constituents extracted from plants have been used to treat various diseases since ancient times<sup>1</sup>. Novel drug delivery system is a novel approach to drug delivery that addresses the limitations of the traditional drug delivery systems. However, the drug delivery system used for

administering the herbal medicine to the patient is traditional and out-of-date, resulting in reduced efficacy of the drug. If the novel drug delivery technology is applied in herbal medicine, it may help in increasing the efficacy and reducing the side effects of various herbal compounds and herbs. This is the basic idea behind incorporating novel method of drug delivery in herbal medicines<sup>2</sup>.

The bioavailability of active principles of plant has become a problem of concern for researchers attributable to poor oral bioavailability of the many of plants, specifically those containing polyphenolic rings in their structures like flavonoids, terpenoids and tannins<sup>3,4</sup>. A variety of solutions have been proposed to counter the problem of poor absorption, such as the preparation

<p><b>QUICK RESPONSE CODE</b></p> 	<p><b>DOI:</b> 10.13040/IJPSR.0975-8232.13(5).2154-62</p> <hr/> <p>This article can be accessed online on <a href="http://www.ijpsr.com">www.ijpsr.com</a></p> <hr/> <p>DOI link: <a href="http://dx.doi.org/10.13040/IJPSR.0975-8232.13(5).2154-62">http://dx.doi.org/10.13040/IJPSR.0975-8232.13(5).2154-62</a></p>
---	---

of emulsions, liposomes and nanoparticles as well as the modification of chemical structures and delivery as prodrugs. Among the potential strategies, phyto-phospholipid complexes (known as phytosomes) have emerged as a promising strategy to enhance the bioavailability of active constituents<sup>5</sup>. Indena, an Italian pharmaceutical and nutraceutical company, first developed the complexation of plant extracts containing water-soluble constituents with phospholipids to improve their bioavailability. They patented the technology as 'PHYTOSOME®'. The term "phyto" means plant and "some" means cell like<sup>6,7</sup>. Phytosomes loaded drug delivery system are prepared from the reaction of the phospholipids like phosphatidylcholine and polymer with the standardized plant extract or polyphenolic phytoconstituents or flavonoids of herbal extracts like ginkgo, grape seed, hawthorn, milk thistle, green tea and ginseng in aprotic solvent<sup>8</sup>.

Embelin (2,5-3-undecyl-1,4-benzoquinone; Figure 1) is one of the constituents found in plants of the Myrsinaceae family, especially in *Embelia* and *Ardisia* sp<sup>9</sup>. Embelin was one of active constituents of *Embelia ribes* Burm. f. Embelin has been reported to possess many pharmacological effects including antifertility, analgesic, anti-inflammatory, antioxidant, antidiabetic, hepatoprotective, anticonvulsant, anxiolytic and antimicrobial activity<sup>10</sup>.

The strategy of complexation of plant drugs or extracts with phospholipids or excipients is one of the best strategies for enhancing bioavailability and helpful viability of various inadequately absorbed plant constituents. Keeping this point of view, the study was performed. Embelin is insoluble in water and soluble in organic solvent, lower oral bioavailability and degradation of embelin in stomach. The studies was perform to Increase the bioavailability Embelin, reduce the dose of Embelin, prevent the degradation of Embelin in the GIT and explore the possibilities of administering Embelin in novel drug delivery system *i.e.* as phytosome<sup>11,12,13</sup>.

## MATERIALS AND METHODS:

**Procurement and Identification of Embelin:** A gift sample of Embelin was procured from Akums Drugs & Pharmaceuticals Ltd., Haridwar, (India).

The pure sample of Embelin was off-white to light yellowish-white powder.

### Drug-excipient Physical Compatibility Study:

The pure Embelin was studied for compatibility testing with the phospholipid and polymer used for preparation of phytosome. Pure Embelin, soya lecithin and chitosan were mixed together as 1:1:1 ratio. The compatibility of Embelin with phospholipid and polymer was analyzed by Fourier Transform Infra-Red Spectroscopy method. An IR spectrum of Embelin with phospholipid and polymer was recorded by FTIR spectroscopy (Shimadzu-8404 S, Japan). The physical compatibility studies of Embelin and its physical mixture with soya lecithin and chitosan was further done by DSC (Differential Scanning Calorimetry, Shimadzu DSC-55, Japan) study.

### Preparation of Embelin Loaded Phytosome Complex<sup>14,15</sup>:

"Anti-solvent precipitation method" and "Rotary evaporation technique" were used for the preparation of phytosome loaded complex formulations of Embelin. Six formulations of Embelin loaded phytosome were prepared **Table 1**.

### Anti-solvent Precipitation Method:

Anti-solvent precipitation method was used to prepare three formulations of Embelin loaded phytosome coded as EMBP1, EMBP2 and EMBP3. Required molar ratio of Embelin and Soya lecithin were taken in 100ml of round bottomed flask (RBF) containing 50 ml of ethanol. Mixture of RBF was ultra sonicated for 30 min for uniform solution. The solution was now refluxed about 3 h in a magnetic stirrer at temperature not exceeding 55 °C. This solution was concentrated upto 10 ml. To this solution, 30 ml n-hexane was added and mixed preciously to get precipitate. This precipitate was introduced drop to drop into a solution of 2% aqueous acetic acid (v/v) solution of chitosan (0.25 % w/v) with continuously stirred using a magnetic stirrer with increasing the temperature upto 55°. The precipitated Embelin loaded phytosome complex was placed in desiccator for overnight. Powdered Embelin loaded phytosome complex was stored in amber coloured bottle at room temperature.

**Rotary Evaporation Technique:** Rotary evaporation technique was used to prepare three

formulations of Embelin loaded phytosome coded as EMBP4, EMBP5 and EMBP6. Embelin and Soya lecithin (both in required molar ratio) were taken in round bottomed flask (RBF) of rotavapour. 50 ml of ethanol was added to the flask. The flask was fitted to rotavapour and refluxed about 3 h at temperature not exceeding 40 °C. A thin film of complex in ethanol solvent was obtained. This thin film was introduced drop to drop into a solution of

2% aqueous acetic acid (v/v) solution of chitosan (0.25% w/v) with continuously stirred using a magnetic stirrer with increasing the temperature.

The precipitated Embelin loaded phytosome complex was placed in desiccator for overnight. Powdered Embelin loaded phytosome complex was stored in amber coloured bottle at room temperature.

**TABLE 1: COMPOSITION OF EMBELIN LOADED PHYTOSOME COMPLEX**

Phytosomes	Drug : Phospholipid (Molar ratio)		Polymer (Chitosan) (%w/v)	Solvent (Ethanol) ml	Solvent (n-Hexane) ml
	Drug (Embelin)	Phospholipid (Soya lecithin)			
EMBP1	1	1.0	0.25	50	30
EMBP2	1	1.5	0.25	50	30
EMBP3	1	2.0	0.25	50	30
EMBP4	1	1.0	0.50	50	30
EMBP5	1	1.5	0.50	50	30
EMBP6	1	2.0	0.50	50	30

### Preparation of Standard Calibration Curve of Pure Embelin:

**Stock Solution:** The standard stock solution was prepared by dissolving 10 mg of pure Embelin in volumetric flask and volume was adjusted to the mark with methanol to form a concentration of 100 µg/ml of drug in solution.

**Calibration Curve of Pure Embelin:** A series of dilutions were prepared from the standard stock solutions ranging from 10 µg/ml, 20 µg/ml, 40, µg/ml, 60 µg/ml, 80 µg/ml and 100 µg/ml of Embelin. Absorbance was recorded at 289 nm under UV spectrophotometer. All the measurements were taken three times to ensure accuracy of the results.

The absorption spectrum of the solution was recorded ranging from 200 to 800 nm using methanol as a blank. The absorbance of these solutions was measured and a graph of concentration versus absorbance was plotted.

### Evaluation of Embelin Loaded Phytosome Complex<sup>16, 17, 18</sup>:

**Percentage Yield of Embelin Loaded Phytosome Complex:** Each formulation of Embelin loaded phytosome complex was properly dried and weighed. The percentage yield of floating microspheres of each formulation was calculated using following formula:

$$\text{Percentage yield} = \frac{\text{Practical yield}}{\text{Theoretical yield}}$$

Where, Practical yield = Weight of prepared phytosome = Theoretical yield = Initial weight of the Embelin, phospholipid and polymer

### Particle (Embelin Loaded Phytosome Complex) Size Determination:

The particle size of the Embelin loaded phytosome complex formulations was measured by the dynamic light scattering (DLS) technique using particle size analyser (Zetasizer-2021, Malvern, UK). The formulated Embelin loaded phytosome complex was dispersed in deionized water and this was used for determination of particle size. The analysis was performed thrice and all the measurements were carried out at a temperature of 250 °C.

### Study of Surface Morphology SEM Analysis:

Scanning electron microscopy (SEM) of the optimized formulation (i.e. EMBP5) of Embelin loaded phytosome complex was performed by Scanning Electron Microscope (Model JSM-5660 LV). Microphotograph taken from Scanning Electron Microscope was used to study the surface morphology of the Embelin loaded phytosome complex.

### In-vitro Entrapment Efficiency of Embelin Loaded Phytosome Complex:

UV-Visible spectrophotometer method of analysis was used for the determination of the Embelin loaded phytosome complex formulations. A known quantity of Embelin loaded phytosome complex (equivalent to

10 mg of embelin) was taken in a beaker 50 ml methanol was added into the beaker. The contents of beaker were stirred for 4 h and then allowed to stand at room temperature for one hour. Supernatant clear liquid was removed from beaker and cen-trifuged at 2000 rpm for 15 min. 0.45  $\mu$  Whatman filter paper was used for the filtration of centrifuged liquid. Absorbance of this liquid was measured by of UV- Visible double beam spectrophotometer (Shimadzu-1800, Japan) at 288.7 nm, after suitable dilution. All measurements were performed in triplicate. Drug entrapment efficiency was determined by using the following equation.

$$\text{Drug entrapment efficiency (\%)} = \frac{\text{Total amount of drug} - \text{Amount of free drug}}{\text{Total amount of drug}} \times 100$$

**In-vitro Release Profiles of Embelin From Embelin Loaded Phytosome Complex:** *In-vitro* drug release (dissolution) study of each Embelin loaded phytosome complex was determined with the help of a USP type I, six station dissolution test apparatus. Basket of dissolution test apparatus was filled with 900 ml of pH 6.8 phosphate buffer. The test was performed at 100 rpm and at  $37 \pm 2$  °C. A weighed amount of Embelin loaded phytosome complex 10 mg of Embelin were dispersed dissolution medium. 5 ml of sample was withdrawn at regular predetermined time interval (0, 30, 60, 1

20, 180, 240, 300, 360, 420, 480, 600, 720 m). Sample was filtered with the help of Whatman filter paper. Equal volume was replenished with fresh phosphate buffer each time to maintain sink condition. The collected samples were suitably diluted with phosphate buffer and assayed by UV-VIS spectrophotometer at 288.7 nm against phosphate buffer as blank to determine the concentration of Embelin present in the dissolution medium.

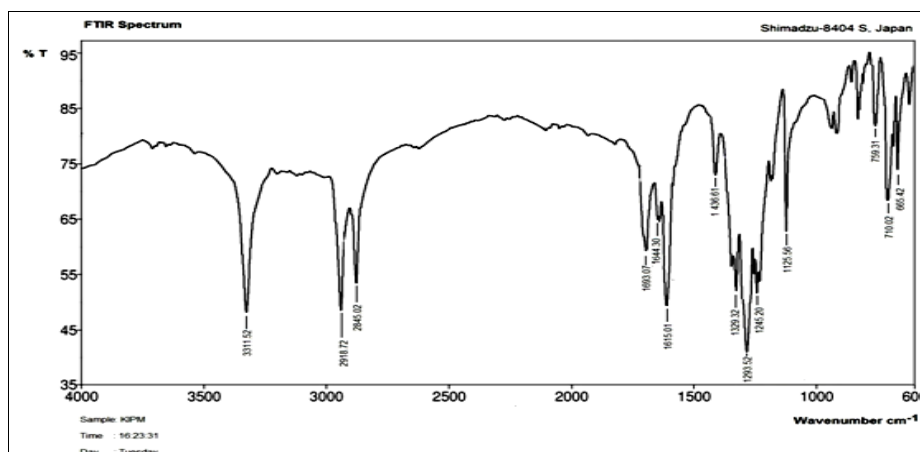
**Drug Release Kinetic Studies of Embelin Loaded Phytosome Complex:** To analyze the mechanism of drug release from the floating microspheres, *in-vitro* dissolution data were fitted in Zero order rate kinetics, First order rate kinetics and Higuchi's model.

## RESULTS AND DISCUSSION:

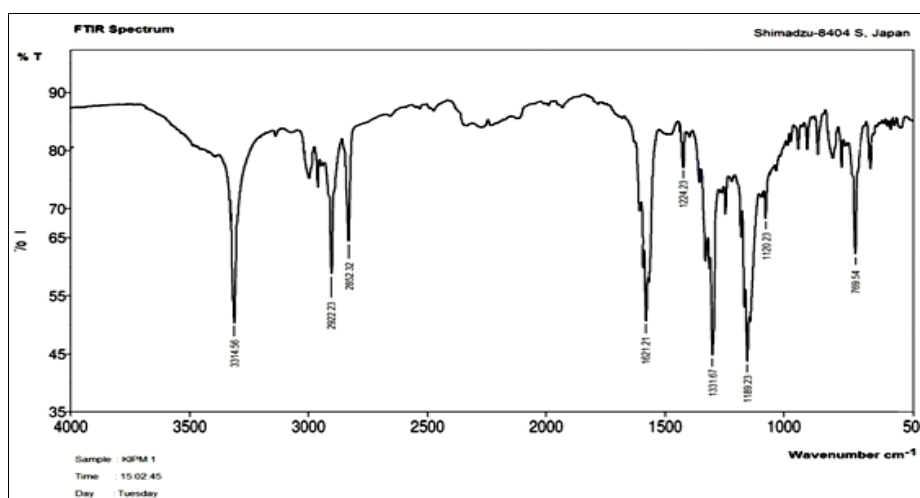
**Drug-excipients Compatibility Study:** Physical compatibility test were performed for selection of excipients for the preparation of phytosomes. FTIR spectroscopy and Differential Scanning Calorimetry (DSC) method of analysis were used for this study. IR-spectra of standard Embelin and with excipients (soya lecithin + chitosan) were compared. Spectral analysis reveals that there were no interaction between standard Embelin and excipients used in the preparation of phytosomes **Table 2, Fig. 1** and **2**.

**TABLE 2: FTIR ANALYSIS OF STANDARD EMBELIN AND WITH EXCIPIENTS**

Characteristic stretching and bending	Standard Embelin	Embelin+Soya lecithin+Chitosan
	Wave numbers (cm <sup>-1</sup> )	
C-O Stretching	1125.56	1120.23
C=O Stretching	1615.01	1621.21
C-H Stretching (methyl)	2845.02	2852.32
C-H Stretching (aromatic)	2918.72	2922.23
O-H (Stretching OH group)	3311.52	3314.56



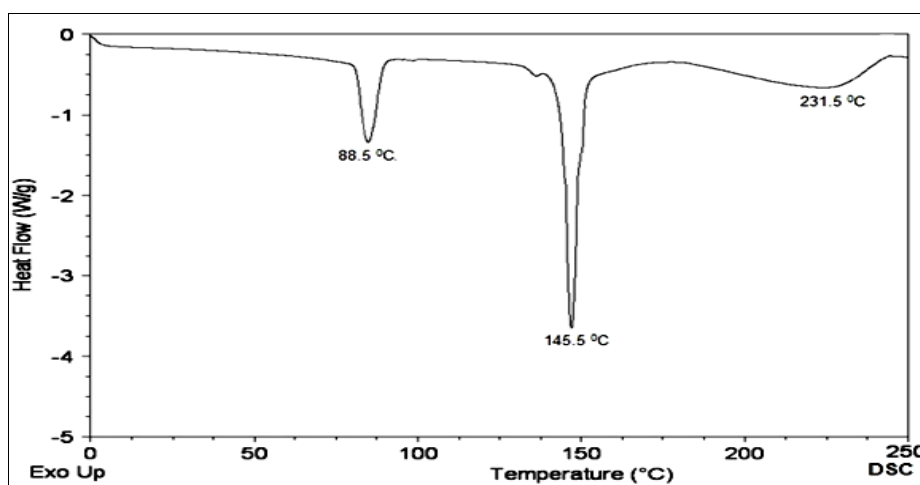
**FIG. 1: FT-IR SPECTRA OF STANDARD EMBELIN**



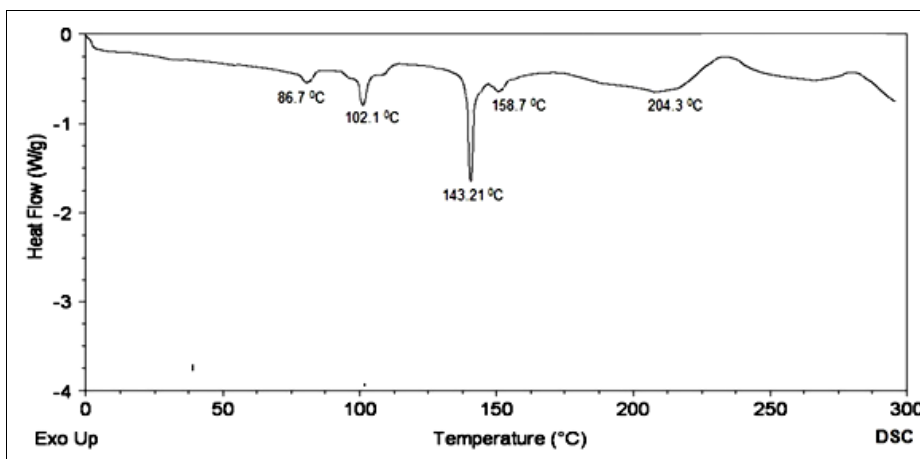
**FIG. 2: FTIR SPECTRA OF STANDARD EMBELIN AND WITH EXCIPIENTS (EMBELIN + SOYA LECITHIN + CHITOSAN)**

Shimadzu DSC (DSC-60, Japan) was also used for compatibility study of standard Embelin with excipients used in formulation. DSC of standard Embelin showed three endothermic peaks at 88.50 °C, 144.50 °C and 231.50 °C which represent loss of water, melting point and decomposition

respectively **Fig. 3**. Three endothermic peaks at 102.10 °C, 143.21°C and 158.7 °C were observed for chitosan, Embelin and soya lecithin in the physical mixture of Embelin, soya lecithin and chitosan **Fig. 4**.



**FIG. 3: DSC THERMOGRAM OF STANDARD EMBELIN**



**FIG. 4: DSC THERMOGRAM OF PHYSICAL MIXTURE OF EMBELIN, SOYA LECITHIN AND CHITOSAN**

**Determination of  $\lambda_{\max}$  of standard Embelin and preparation of calibration curve of standard Embelin:** The  $\lambda_{\max}$  of standard Embelin was measured by UV-VIS double beam spectrophotometer (Shimadzu-1800, Japan).

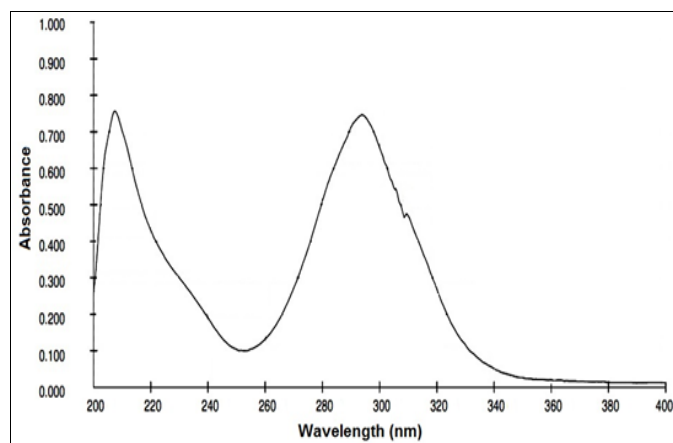


FIG. 5: UV SPECTRA OF STANDARD EMBELIN

The  $\lambda_{\max}$  of standard Embelin was found to be of 288.7 nm **Fig. 5**. Standard calibration curve was prepared by plotting absorbance data of standard Embelin against various concentrations in methanol **Fig. 6**.

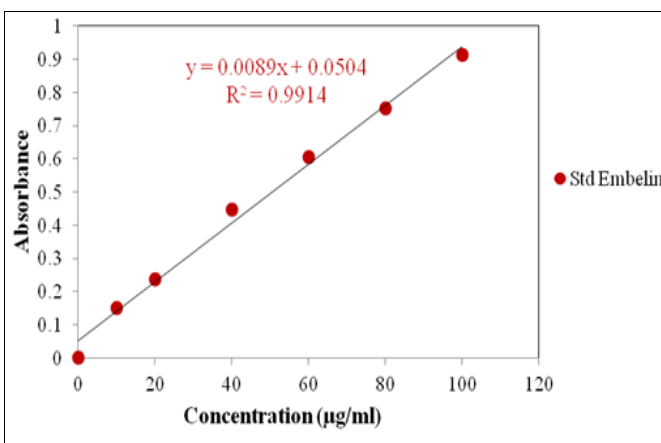


FIG. 6: CALIBRATION CURVE OF STANDARD EMBELIN

**Evaluation of Embelin Loaded Phytosome Complex:**

**Percentage Yield, Particle Size Determination and *In-vitro* Entrapment Efficiency of Embelin Loaded Phytosome Complex:** The percentage yields were calculated for each properly dried

Embelin loaded phytosome complex formulation. Formulation EMBP4 showed highest percentage yield ( $86.20 \pm 0.53$ ) while formulation EMBP6 showed lowest percentage yield ( $60.00 \pm 0.33$ ) **Table 3**.

TABLE 3: PERCENTAGE YIELD, PARTICLE SIZE DETERMINATION AND *IN-VITRO* ENTRAPMENT EFFICIENCY OF EMBELIN LOADED PHYTOSOME COMPLEX

S. no.	Formulations	Percentage yield	Mean diameter of Embelin loaded phytosome complex (nm)	Entrapment efficiency (%)
1	EMBP1	$65.80 \pm 0.21$	$485.32 \pm 1.213$	$73.31 \pm 1.323$
2	EMBP2	$74.60 \pm 0.37$	$387.47 \pm 1.373$	$77.62 \pm 1.034$
3	EMBP3	$70.53 \pm 0.33$	$436.37 \pm 2.361$	$64.99 \pm 1.546$
4	EMBP4	$76.32 \pm 0.53$	$456.26 \pm 1.761$	$74.23 \pm 1.832$
5	EMBP5	$86.20 \pm 0.67$	$345.45 \pm 1.231$	$81.78 \pm 1.151$
6	EMBP6	$60.00 \pm 0.33$	$451.39 \pm 7.316$	$66.69 \pm 1.321$

After performing the particle size determination, the average diameter of dried Embelin loaded phytosome complex was found to be varies from  $345.45 \pm 1.231$  nm to  $485.32 \pm 1.213$  nm as presented in Table 6.7. Formulation EMBP5 exhibits lowest  $345.45 \pm 1.231$  diameter **Table 3**. The entrapment efficiency of Embelin loaded phytosome complex varies from  $64.99 \pm 1.546$  to  $81.78 \pm 1.151\%$  as shown in Table 6.7. It was observed that Embelin loaded phytosome complex formulation (EMBP5) exhibits highest of  $81.78 \pm 1.151\%$  entrapment efficiency **Table 3**.

**SEM Analysis:** SEM photomicrographs give us brief information regarding the solid state

properties and surface morphology of Embelin loaded phytosome complex. SEM photomicrographs of optimized formulation.

(EMBP5) of Embelin loaded phytosome complex showed that the phytosomes are less spherical with smooth and rough surface and slightly aggregated.

The phytosomes generally appeared as either individual body or assemblies of non-fused phytosomes **Fig. 7** and **8**.

***In-vitro* Release Profiles of Embelin From Embelin Loaded Phytosome Complex:** A USP type I, six station dissolution test apparatus was

used for the determination of *in-vitro* release profiles of embelin from Embelin loaded phytosome complex. At specified time intervals, sample aliquots were withdrawn and analyzed

spectrophotometrically at 288.7 nm. The results of the *in-vitro* dissolution studies shows controlled and predictable manner Table 4 and Fig. 9 and 10.

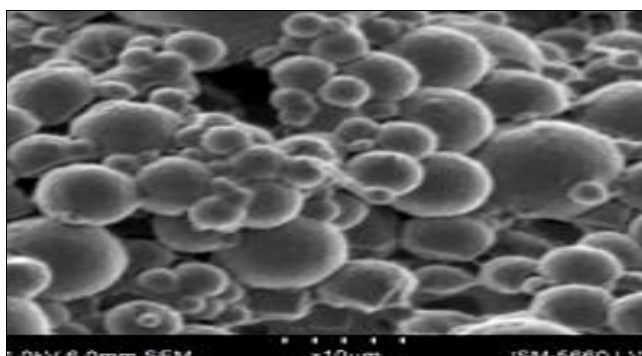


FIG. 7: SEM PHOTOMICROGRAPH OF OPTIMIZED FORMULATION (EMBP5) OF EMBELIN LOADED PHYTOSOME COMPLEX

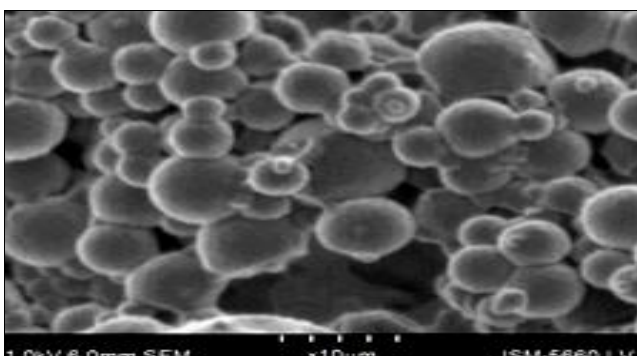


FIG. 8: SEM PHOTOMICROGRAPH OF OPTIMIZED FORMULATION (EMBP5) OF EMBELIN LOADED PHYTOSOME COMPLEX

TABLE 4: *IN-VITRO* RELEASE PROFILES OF EMBELIN FROM EMBELIN LOADED PHYTOSOME COMPLEXE

Time (h)	Cumulative percentage (%) of drug release					
	EMBP1	EMBP2	EMBP3	EMBP4	EMBP5	EMBP6
0	0	0	0	0	0	0
0.5	3.63	5.33	7.21	3.21	4.32	2.78
1	10.25	13.26	15.13	14.12	14.32	12.54
2	21.43	24.31	27.58	23.54	24.43	22.24
3	33.71	35.48	38.36	33.24	35.54	32.12
4	44.43	46.71	49.71	44.21	46.35	42.12
5	52.24	54.21	57.72	55.35	58.21	57.22
6	61.27	62.74	63.43	62.35	66.55	63.41
7	66.74	66.56	67.67	66.45	69.4	65.35
8	72.72	71.64	71.31	72.22	74.58	71.77
10	77.56	78.44	80.06	77.45	80.45	76.42
12	78.23	79.32	81.74	79.92	86.52	78.21

**Drug Release Kinetic Studies of Embelin Loaded Phytosome Complex:** Different mathematical models may be applied for describing the kinetics of the drug release process from dosage

forms. The *in-vitro* data obtained was fitted into Zero order rate kinetics, First order rate kinetics and Higuchi’s model.

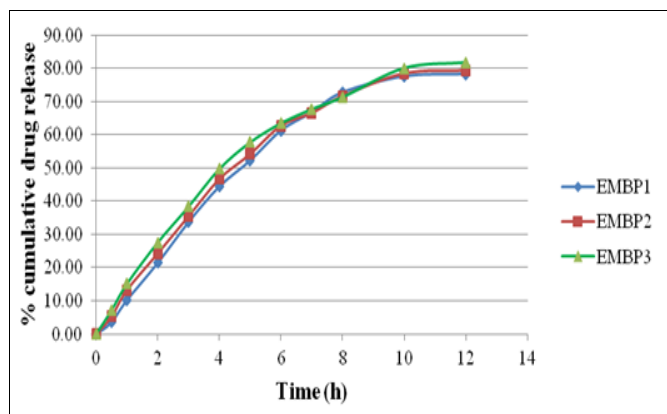


FIG. 9: *IN-VITRO* RELEASE PROFILES OF EMBELIN FROM EMBELIN LOADED PHYTOSOME COMPLEX (EMBP1, EMBP2 AND EMBP3)

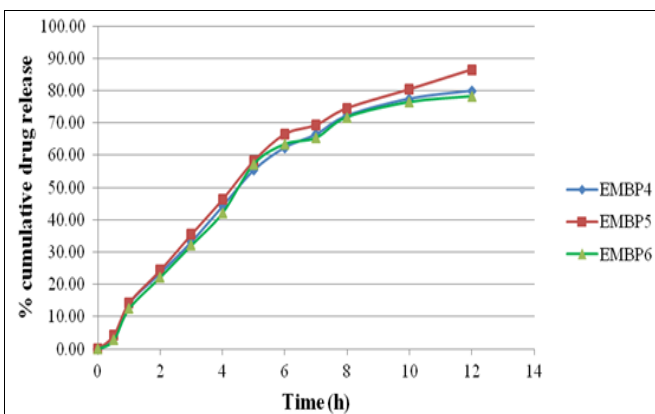


FIG. 10: *IN-VITRO* RELEASE PROFILES OF EMBELIN FROM EMBELIN LOADED PHYTOSOME COMPLEX (EMBP4, EMBP5 AND EMBP6)

The kinetics of release from formulations were determined by finding the best fit of the release data to zero order, first order and Higuchi's model. Initial drug releases from all formulations were significantly high due to the dissolution of surface adhered drug. As the time increases the release was

slow due to the diffusion process. From the data Table 5, the release of embelin from Embelin loaded phytosome complex was by fickian diffusion mechanism and followed first order kinetics (concentration dependant).

**TABLE 5: REGRESSION CO-EFFICIENT (R<sup>2</sup>) VALUES OF DIFFERENT KINETIC MODELS**

Mechanism of drug release	EMBP1	EMBP2	EMBP3	EMBP4	EMBP5	EMBP6
	<b>Regression co-efficient (R<sup>2</sup>) values</b>					
Zero order drug release kinetics	0.916	0.9137	0.9091	0.9169	0.9248	0.9065
First order drug release kinetics	0.9819	0.9887	0.975	0.9838	0.9956	0.9708
Higuchi's Model diffusion release kinetics	0.9616	0.9712	0.9784	0.9578	0.9707	0.9578
Best fit model	First order & Higuchi's Model	First order & Higuchi's Model	First order & Higuchi's Model	First order & Higuchi's Model	First order & Higuchi's Model	First order & Higuchi's Model

**CONCLUSIONS:** Embelin was one of active constituents of *Embelia ribes* Burm. f. Embelin has been reported to possess many pharmacological effects. Phytosomes study can increase therapeutic efficacy, decrease the frequency of administration. Embelin loaded phytosome complex were formulated by anti-solvent precipitation method and Rotary evaporation technique. Total six formulations coded as EMBP1, EMBP2, EMBP3, EMBP4, EMBP5 and EMBP6 of Embelin loaded phytosome were prepared. Among six formulations, the Formulation EMBP5 well optimized. EMBP5 exhibits lowest 345.45 ± 1.231 diameter. The entrapment efficiency of Embelin loaded phytosome complex varies from 64.99 ± 1.546 to 81.78 ± 1.151%. Embelin loaded phytosome complex formulation (EMBP5) exhibits highest of 81.78 ± 1.151% entrapment efficiency. SEM photomicrographs of optimized formulation (EMBP5) of Embelin loaded phytosome complex showed that the phytosomes are less spherical with smooth and rough surface and slightly aggregated. *In-vitro* dissolution study of phytosome extended release pattern show 12 h, 86.52% release. Different mathematical models may be applied for describing the kinetics of the drug release process from dosage forms. From the data, the release of embelin from Embelin loaded phytosome complex was by fickian diffusion mechanism and followed first order kinetics (concentration dependant). On the basis of above observation, it has been presumed that Embelin loaded phytosome complex serve as a useful novel drug delivery system and provide

more therapeutic efficacy than conventional plant extracts.

**ACKNOWLEDGEMENT:** The author would like to thank the Director (Dr. J. N. Mishra) and Mr. D. K. Vishwakarma, Kailash Institute of Pharmacy & Management, Gorakhpur, (UP), India,

**CONFLICTS OF INTEREST:** The authors declare no conflicts of interest.

#### REFERENCES:

1. Rathee S and Kamboj A: Optimization and development of antidiabetic phytosomes by the box-behnken design. *Journal of Liposome Research* 2018; 28(2): 161-72.
2. Kidd PM: Bioavailability and activity of phytosome complexes from botanical polyphenols: the silymarin, curcumin, green tea and grape seed extracts. *Altern Med Rev* 2009; 14(3): 226-46.
3. Udapurkar PP and Bhusnure OG: Kamble SR, Diosmin Phytosomes: development, optimization and physicochemical characterization. *Indian J Pharm Educ Res* 2018; 52(4): 29-36
4. Manach C, Scalbert A, Morand C, Rémésy C and Jiménez L: Polyphenols: food source and bioavailability. *Am J Clin Nutr* 2004; 79(5): 727-47.
5. Manach C, Scalbert A, Morand C, Rémésy C and Jiménez L: Polyphenols: food source and bioavailability. *Am J Clin Nutr* 2004; 79(5): 727-47
6. Sravanth M and Krishna Shiva J: Phytosomes a novel drug delivery for herbal extracts. *International Journal Pharmaceutical Science and Research* 2013; 4: 949-59.
7. Ting Y, Jiang Y, Ho CT and Huang Q: Common delivery systems for enhancing in vivo bioavailability and biological efficacy of nutraceuticals. *J Funct Foods* 2014; 7: 112-28
8. Saraf S, Khan J, Alexander A, Ajazuddin and Saraf S: Recent advances and future prospects of phyto-phospholipid complexation technique for improving



- pharmacokinetic profile of plant actives. *J Control Release* 2013; 168(1): 50-60.
9. More MS, Shende MA, Kolhe DB and Jaiswal NM: Herbosomes: herbo-phospholipid complex an approach for absorption enhancement. *International Journal of Biological & Pharmaceutical Research* 2012; 3(8): 946-55.
  10. Arun K and Bimlesh K: A review on phytosomes: novel approach for herbal phytochemicals. *Asian Journal of pharmaceutical and Clinical Research* 2017; 10(10): 41-47.
  11. Teng Z, Yuan C and Zhang F: Intestinal absorption and first-pass metabolism of polyphenol compounds in rat and their transport dynamics in caco-2 cells. *PLoS One* 2012; 7(1): 29647.
  12. Podolak I, Galanty A and Janeczko Z: Cytotoxic activity of embelin from *Lys punctata*. *Fitoterapia* 2005; 7: 333-35.
  13. Kumar S and Deshmukh R: Embelin as a potential drug molecule: a review. *J Pharma Nat Prod* 2018; 3(3): 144.
  14. Patel J, Patel R, Khambholja K and Patel N: An overview of phytosomes as an advanced herbal drug delivery system. *Asian J Pharma Sci* 2018; 4(6): 363-71.
  15. Gupta NK and Dixit VK: Development and evaluation of vesicular system for curcumin delivery. *Archives of Dermatological Research* 2021; 303: 89-101.
  16. Sikarwar MS, Sharma S, Jain AK and Parial SD: Preparation, characterization and evaluation of marsupin-phospholipid complex. *AAPS P Sci T* 2020; 9(1): 129-37.
  17. Maiti K, Mukherjee K, Gantait A, Saha BP and Mukherjee PK: Curcumin-phospholipid complex: Preparation therapeutic evaluation and pharmacokinetic study in rats. *Current Drug Delivery* 2019; 31-38.
  18. Semalty A, Semalty M, Singh DM and Rawat SM: Preparation and characterization of phospholipid complexes of naringenin for effective drug delivery, *Fitoterapia* 2019; (8): 59-62

**How to cite this article:**

Priti KM, Vishwakarma DK and Mishra JN: Development and in-vitro evaluation of embelin (a phytoconstituent) loaded phytosome complex. *Int J Pharm Sci & Res* 2022; 15(5): 2154-62. doi: 10.13040/IJPSR.0975-8232.13(5).2154-62.

All © 2022 are reserved by International Journal of Pharmaceutical Sciences and Research. This Journal licensed under a Creative Commons Attribution-NonCommercial-ShareAlike 3.0 Unported License.

This article can be downloaded to **Android OS** based mobile. Scan QR Code using Code/Bar Scanner from your mobile. (Scanners are available on Google Playstore)